

 **BOEING**  
COMPONENT  
MAINTENANCE MANUAL

TO: ALL HOLDERS OF NO. 3 INBOARD TRAILING EDGE FLAP CENTER MOVEABLE FAIRING  
ASSEMBLY COMPONENT MAINTENANCE MANUAL 57-26-11

REVISION NO. 9 DATED NOV 01/05

HIGHLIGHTS

Pages which have been added or revised are outlined below together with the highlights of the revision. Remove and insert the affected pages as listed and enter Revision No. and date on the Record of Revision Sheet.

CHAPTER/SECTION

AND PAGE NO.

DESCRIPTION OF CHANGE

TITLE PAGE

Added new top assemblies 113T1720-61, -62, -65, -66, -69, -70, -75, -76, -81, -82, -93, -94, -95, -96, -97, -98, -99G, -100G, -101G, -102G, -107G, -108G.

1

TR & SB RECORD

Incorporated SB 767-57-0087.

1

401

Updated per latest engineering.

REPAIR-GEN

602

REPAIR 1-1

601

REPAIR 2-1

601-603

REPAIR 3-1

601

701

1003-1011, 1019-1042

501

Updated without technical change.

REPAIR 2-1

601-603

REPAIR 4-1

601-602

701-703

**57-26-11**

HIGHLIGHTS

01.1

Page 1

Nov 01/05

 **BOEING**  
COMPONENT  
MAINTENANCE MANUAL

CHAPTER/SECTION  
AND PAGE NO.

DESCRIPTION OF CHANGE

REPAIR 2-1  
601

Removed top assemblies from miscellaneous parts REPAIR 2-1 refinish. These assemblies are customer specific refinish and should be refinished per customer specifications.

REPAIR 2-1  
602  
1013-1018

Revised IPL Art.

1044-1045

Relocated IPL parts from IPL Fig. 1 to a new IPL Fig. 2.

**57-26-11**

HIGHLIGHTS

01.1

Page 2

Nov 01/05

## NO. 3 INBOARD TRAILING EDGE FLAP CENTER MOVEABLE FAIRING ASSEMBLY

PART NUMBERS 13T1720-47SP,-48SP,-49,-50,-53SP,  
-54SP,-55,-56,-57,-58,-61,  
-62,-65,-66,-69,-70,-75,  
-76,-81,-82,-93 THRU -98,  
-99G,-100G,-101G,-102G,  
-107G,-108G

COMPONENT MAINTENANCE MANUAL  
WITH  
ILLUSTRATED PARTS LIST

**57-26-11**

TITLE PAGE

Page 1

Nov 01/05

01.1



REVISION RECORD

- Retain this record in front of manual. On receipt of revision, insert revised pages in the manual, and enter revision number, date inserted and initial.

REVISION NUMBER	REVISION DATE	DATE FILED	BY	REVISION NUMBER	REVISION DATE	DATE FILED	BY


**BOEING**  
 COMPONENT  
 MAINTENANCE MANUAL

## TEMPORARY REVISION AND SERVICE BULLETIN RECORD

BOEING SERVICE BULLETIN	BOEING TEMPORARY REVISION	OTHER DIRECTIVE	DATE OF INCORPORATION INTO MANUAL
SB 57-0087		PRR B10499 PRR B11382-2 PRR B11382-3	APR 10/82 OCT 10/85 JAN 01/89 NOV 01/05

**57-26-11**

TR &amp; SB RECORD

01.1

Page 1

Nov 01/05


**BOEING**  
 COMPONENT  
 MAINTENANCE MANUAL

PAGE	DATE	CODE	PAGE	DATE	CODE
57-26-11			REPAIR-GENERAL		
			601	JUL 01/98	01.1
			*602	NOV 01/05	01.1
TITLE PAGE			REPAIR 1-1		
*1	NOV 01/05	01.1	*601	NOV 01/05	01.1
2	BLANK		602	BLANK	
REVISION RECORD			REPAIR 2-1		
1	JUL 10/83	01	*601	NOV 01/05	01.1
2	BLANK		*602	NOV 01/05	01.1
TR & SB RECORD			*603	NOV 01/05	01.1
*1	NOV 01/05	01.1	*604	BLANK	
2	BLANK		REPAIR 3-1		
LIST OF EFFECTIVE PAGES			*601	NOV 01/05	01.1
*1	NOV 01/05	01	602	OCT 10/85	01.1
THRU LAST PAGE			REPAIR 4-1		
CONTENTS			*601	NOV 01/05	01.1
1	OCT 10/85	01.1	*602	NOV 01/05	01.1
2	BLANK		ASSEMBLY		
INTRODUCTION			*701	NOV 01/05	01.1
1	JUL 10/83	01	*702	NOV 01/05	01.1
2	BLANK		*703	NOV 01/05	01.1
DESCRIPTION & OPERATION			704	BLANK	
1	OCT 10/85	01.1	ILLUSTRATED PARTS LIST		
2	BLANK		1001	JUL 10/83	01
DISASSEMBLY			1002	JAN 01/94	01.1
301	OCT 10/85	01.1	*1003	NOV 01/05	01.1
302	BLANK		*1004	NOV 01/05	01.1
CLEANING			*1005	NOV 01/05	01.1
*401	NOV 01/05	01.1	*1006	NOV 01/05	01.1
402	BLANK		*1007	NOV 01/05	01.1
CHECK			*1008	NOV 01/05	01.1
*501	NOV 01/05	01.1	*1009	NOV 01/05	01.1
502	BLANK		*1010	NOV 01/05	01.1
			*1011	NOV 01/05	01.1
			*1012	BLANK	
			*1013	NOV 01/05	01.1
			*1014	NOV 01/05	01.1

\* = REVISED, ADDED OR DELETED

57-26-11

 EFFECTIVE PAGES  
 CONTINUED Page 1  
 01 Nov 01/05

PAGE	DATE	CODE	PAGE	DATE	CODE
ILLUSTRATED PARTS LIST		CONT.			
*1015	NOV 01/05	01.1			
*1016	NOV 01/05	01.1			
*1017	NOV 01/05	01.1			
*1018	NOV 01/05	01.1			
*1019	NOV 01/05	01.1			
*1020	NOV 01/05	01.1			
*1021	NOV 01/05	01.1			
*1022	NOV 01/05	01.1			
*1023	NOV 01/05	01.1			
*1024	NOV 01/05	01.1			
*1025	NOV 01/05	01.1			
*1026	NOV 01/05	01.1			
*1027	NOV 01/05	01.1			
*1028	NOV 01/05	01.1			
*1029	NOV 01/05	01.1			
*1030	NOV 01/05	01.1			
*1031	NOV 01/05	01.1			
*1032	NOV 01/05	01.1			
*1033	NOV 01/05	01.1			
*1034	NOV 01/05	01.1			
*1035	NOV 01/05	01.1			
*1036	NOV 01/05	01.1			
*1037	NOV 01/05	01.1			
*1038	NOV 01/05	01.1			
*1039	NOV 01/05	01.1			
*1040	NOV 01/05	01.1			
*1041	NOV 01/05	01.1			
*1042	NOV 01/05	01.1			
*1043	BLANK				
*1044	NOV 01/05	01.1			
*1045	NOV 01/05	01.1			
*1046	BLANK				

\* = REVISED, ADDED OR DELETED

# 57-26-11

EFFECTIVE PAGES  
 LAST PAGE Page 2  
 01 Nov 01/05



TABLE OF CONTENTS

<u>Paragraph Title</u>	<u>Page</u>
Description and Operation. . . . .	1
Testing/Trouble Shooting (not applicable)	
Disassembly. . . . .	301
Cleaning . . . . .	401
Check. . . . .	501
Repair . . . . .	601
Assembly . . . . .	701
Fits and Clearances (not applicable)	
Special Tools (not applicable)	
Illustrated Parts List . . . . .	1001

57-26-11

CONTENTS

Page 1

Oct 10/85

01.1





## INTRODUCTION

The instructions in this manual provide the information necessary to perform maintenance functions ranging from simple checks and replacement to complete shop-type repair.

This manual is divided into separate sections:

- |  |                              |
|--|------------------------------|
| 1. Title Page                                      | 4. List of Effective Pages   |
| 2. Record of Revisions                             | 5. Table of Contents         |
| 3. Temporary Revision &<br>Service Bulletin Record | 6. Introduction              |
|  | 7. Procedures & IPL Sections |

Refer to the Table of Contents for the page location of applicable sections. An asterisked flagnote \*[ ] in place of the page number indicates that no special instructions are provided since the function can be performed using standard industry practices.

The beginning of the REPAIR section includes a list of the separate repairs, a list of applicable standard Boeing practices, and an explanation of the True Position Dimensioning symbols used.

An explanation of the use of the Illustrated Parts List is provided in the Introduction to that section.

All weights and measurements used in the manual are in English units, unless otherwise stated. When metric equivalents are given they will be in parentheses following the English units.

Design changes, optional parts, configuration differences and Service Bulletin modifications create alternate part numbers. These are identified in the Illustrated Parts List (IPL) by adding an alphabetical character to the basic item number. The resulting item number is called an alpha-variant. Throughout the manual, IPL basic item number references also apply to alpha-variants unless otherwise indicated.

Verification:

Assembly

# 57-26-11

INTRODUCTION

01

Page 1

Jul 10/83



NO. 3 INBOARD TRAILING EDGE FLAP CENTER MOVEABLE FAIRING ASSEMBLY

DESCRIPTION AND OPERATION

1. Description and Operation

A. The center moveable assembly for the No. 3 fairing consists of aluminum support frames encased in a kevlar/graphite epoxy honeycomb sandwich shell which provides smooth airflow around structural members of the inboard trailing edge flap.

2. Leading Particulars (approx)

- A. Width -- 17 inches
- B. Length -- 56 inches
- C. Height -- 17 inches
- D. Weight -- 28 pounds

57-26-11

DESCRIPTION & OPERATION

01.1

Page 1

Oct 10/85



|

DISASSEMBLY

- | 1. Use standard industry practices for disassembly of this component plus the following steps.

NOTE: Disassemble this component only as necessary to complete fault isolation, determine the serviceability of parts, perform required repairs and restore the unit to serviceable condition.

57-26-11

DISASSEMBLY

01.1

Page 301

Oct 10/85



CLEANING

CAUTION: DO NOT VAPOR DEGREASE GRAPHITE ARAMID EPOXY STRUCTURES WITH CHLORINATED CLEANING AGENTS SUCH AS METHYLENE CHLORIDE, TRICHLOROETHYLENE, AND TRICHLOROETHANE. CHLORINATED CLEANING AGENTS WILL CAUSE DAMAGE TO GRAPHITE/ARAMID EPOXY STRUCTURES.

DO NOT PUT PARTS IN THE SOLVENT OR LET SOLVENT STAY ON THE PARTS.

1. Clean all parts but the bearings by standard industry practices and the instructions in SOPM 20-30-03.
2. Clean bearings (145C, 207) per SOPM 20-30-01.

57-26-11

CLEANING  
Page 401  
Nov 01/05

01.1

CHECK

1. Check all parts for obvious defects in accordance with standard industry practices.
2. Magnetic particle check per 20-20-01 -- Bearing retainers (160) and retainer plates (155) and tube (520).
3. Penetrant check per 20-20-02 -- Frames (195, 200, 245, 250).
4. Visual Check
  - A. Check honeycomb and bonded parts for evidence of delamination, internal water, scratches, and contour defects.
    - (1) Examine for delamination ultrasonically.
    - (2) Examine areas suspected of containing water radiographically to determine extend of damage.
    - (3) Examine edges of panel carefully for cuts and abrasions.  
Delamination starts very easily from damage to an edge member of honeycomb panel.
  - B. Refer to 767 structural repair manual 57-53-71 for allowable damage data.

**57-26-11**

CHECK

01.1

Page 501

Nov 01/05

REPAIR – GENERAL1. Content

- A. Repair, refinish and replacement procedures are included in separate repair sections as follows:

<u>P/N</u>	<u>NAME</u>	<u>REPAIR</u>
113T1724	FRAME ASSEMBLY	1-1
- - - -	MISCELLANEOUS PARTS	2-1
113T1721	CENTER BONDED ASSEMBLY	3-1
113T1732	PUSHROD ASSEMBLY	4-1

2. Standard Practices

- A. Refer to the following standard practices as applicable, for details of procedures in individual repairs.

20-00-00	Introduction
20-11-03	Repair of Electrical Terminations and Electrical Bonding Areas
20-30-02	Stripping of Protective finishes
20-30-03	General Cleaning Procedures
20-30-86	Solvents for Final Cleaning of Solvent Resistant Organic Coatings Before Painting (Series 86)
20-41-01	Decoding Table for Boeing Finish Codes
20-41-02	Application of Chemical and Solvent Resistant Finishes
20-42-05	Bright Cadmium Plating
20-43-01	Chromic Acid Anodizing
20-50-03	Bearing Installation and Retention
20-60-02	Finishing Materials
20-60-03	Lubricants
20-60-04	Miscellaneous Materials

3. Materials

NOTE: Equivalent substitutes can be used.

- A. Coating, conductive -- BMS 10-21, type 3 (Replaces Type 1) (Ref SOPM 20-60-04)
- B. Enamel -- BMS 10-60, type 2 (Ref SOPM 20-60-02)
- C. Primer -- BMS 10-11, type 1 (Ref SOPM 20-60-02)

57-26-11

REPAIR-GENERAL

01.1

Page 601

Jul 01/98

- D. Primer -- BMS 10-79, type 2 (Ref SOPM 20-60-02)
- E. Sealant -- BMS 5-95 (Ref SOPM/20-60-04)
- F. Static conditioner -- 28-C-1 (Ref SOPM 20-60-02)
- G. Surfacer -- 8-W-5 (Ref SOPM 20-60-02)
- H. Solvent -- Series 86 (Ref SOPM 20-30-86)
- I. Solvent -- Toluene (Ref SOPM 20-60-01)
- J. Sandpaper -- #180 grit or finer (Ref SOPM 20-60-04)
- K. Grease -- MIL-G-23827 (Ref SOPM 20-50-07)
- | L. Coating -- BMS 10-21, Type 3 (Ref SOPM 20-60-02)
- | M. Primer -- BMS 10-103, Type 1 (Ref SOPM 20-60-02)

#### 4. Dimensioning Symbols

- A. Standard True Position Dimensioning Symbols used in applicable repair procedures are shown in SOPM 20-00-00.

**57-26-11**

REPAIR-GENERAL

01.1

Page 602

Nov 01/05

FRAME ASSEMBLY – REPAIR 1-1

113T1724-1, -2, -17, -18

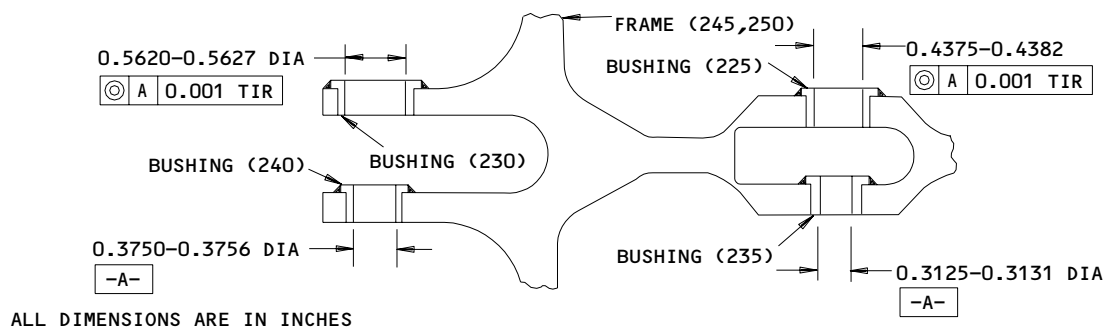
**NOTE:** Refer to REPAIR – GENERAL for a list of applicable standard practices.

1. Bushing Replacement (IPL Fig. 1)

- A. Remove bushings (225, 230, 235, 240).
- B. Install bushings (225, 230, 235, 240) per 20-50-03 using BMS 5-95 sealant.
- C. Machine bores of bushings (225, 230, 235, 240) to dimensions shown (Fig. 601).
- D. Fillet seal around flanges of bushings using BMS 5-95 sealant.

2. Refinish

- A. Frames (245, 245A, 250, 250A) -- Chromic acid anodize and apply one coat of BMS 10-11, Type 1 primer (F-18.13) all over, except omit primer from bushing holes. Material: Aluminum alloy.
- B. Frames (245B, 245C, 250B, 250C) -- Chromic acid anodize (F-17.04) all over. Apply one coat BMS 10-11, Type 1 primer (F-20.02), except omit primer from bushing holes. Material: Aluminum alloy.
- C. Frame assemblies (209, 209A, 210, 210A) -- Apply BMS 10-60, BAC707 gray gloss enamel (SRF 14.9813) all over, except omit enamel from outer convex surface of frame and bushings. Material: Aluminum alloy.



Bushing Replacement  
Figure 601




**BOEING**  
 COMPONENT  
 MAINTENANCE MANUAL
MISCELLANEOUS PARTS - REPAIR 2-1

NOTE: Repair of these parts consists of restoration of original finish.

IPL FIG. & ITEM	MATERIAL	FINISH
<u>Fig. 1</u>		
Retainer (95 thru 95D, 96, 97, 97A, 98)	Al alloy	Chemical treat (colored film) and apply one coat BMS 10-11, Type 1 primer (F-18.06) all over. Apply BMS 10-60, BAC707 gray gloss enamel (SRF 14.9813) all over.
Retainer (95E, 96A, 97B, 98A) Retainer (100 thru 100D)	Al alloy	Chromic acid anodize (F-17.04). Apply one coat BMS 10-11, Type 1 primer (F-20.02) all over. Apply BMS 10-60, BAC707 gray gloss enamel (SRF-14.9813) all over.
Retainer (97C, 98B) Retainer 100 thru 100D	Al alloy	Chemical treat (colored film) all surfaces (F-17.07). Apply one coat BMS 10-11, Type 1 primer (F-20.02). Apply BMS 10-60, BAC 707 gray gloss enamel (SRF-14.9813) all over.
Retainer (50A, 50B, 55A, 55B, 94, 94A, 94G, 94H)	Al alloy	Chromic acid anodize and apply one coat BMS 10-11, Type 1 primer (F-18.13). Apply BMS 10-60, BAC707 gray gloss enamel (SRF-14.9813) all over except omit enamel from seal slots.

Refinish Details  
 Figure 601 (Sheet 1)

**57-26-11**

REPAIR 2-1

01.1

Page 601

Nov 01/05

IPL FIG. & ITEM	MATERIAL	FINISH
Retainer Plate (155), Bearing Retainer (160)	Al alloy	Cadmium plate, Type 2, class 2 (F-15.06) all over.
Door (120,125,130,135)	Al alloy	Chemical treat (colored film) all surfaces (F-17.07). Apply one coat BMS 10-11, Type 1 primer (F-20.02) all over, except omit primer from holes.
Door (120A,125A,130A,135A)	Al alloy	Chemical treat (colored film) all surfaces (F-17.07). Apply one coat BMS 10-79, Type 3 primer (F-19.47) all over, except omit primer from holes.
Bonded assembly (275A,275B,280A,280B)	Honeycomb sandwich	Prepare exterior surface per SRF-14.672 and apply one coat BMS 10-79, Type 2 primer (F-19.46).
Bonded assembly (275C,280C)	Honeycomb sandwich	Prepare exterior surface per F-14.679 except do not use surfacer. Apply one coat BMS 10-21, Type 3 coating (F-14.685) to exterior surfaces plus trimmed edges. Apply one coat BMS 10-103, Type 1 primer (F-14.692) to exterior surfaces plus trimmed edges.
Bonded assembly (275D,280D)	Honeycomb sandwich	Apply no finish (F-25.01) but temporary coatings can be applied for handling, transportation and storage.

Refinish Details  
 Figure 601 (Sheet 2)

# 57-26-11

REPAIR 2-1

01.1 Page 602

Nov 01/05


**BOEING**  
 COMPONENT  
 MAINTENANCE MANUAL

IPL FIG. & ITEM	MATERIAL	FINISH
Frame (195,195A, 195B,200,200A,200B)	Al alloy	Chromic acid anodize and apply one coat BMS 10-11, Type 1 primer (F-18.13) all over except omit primer from bearing retainer holes and lube holes. Apply BMS 10-60 BAC707 gray gloss enamel (SRF 14.9813) all over, except omit from bearing retainer holes and lube holes.
Frame (245,245A, 250,250A)	Al alloy	Chromic acid anodize and apply one coat BMS 10-11, Type 1 primer (F-18.13) all over except omit primer from bushing holes. Apply BMS 10-60 BAC707 gray gloss enamel (SRF-14.9813) all over except omit from bushing.
Frame (245B,245C, 250B,250C)	Al alloy	Chromic acid anodize (F-17.04) all over. Apply one coat BMS 10-11, Type 1 primer (F-20.02) all over except omit primer from bushing holes.
Bonded Assembly, center (255A,255B, 255C,260A,260B, 260C)	Kevlar/graphite epoxy honeycomb sandwich	No finish

Refinish Details  
 Figure 601 (Sheet 3)

# 57-26-11

REPAIR 2-1

01.1

Page 603

Nov 01/05

CENTER BONDED ASSEMBLY – REPAIR 3-1

113T1721-7, -8, -13, -14, -19, -20, -27, -28

NOTE: Refer to REPAIR – GENERAL for a list of applicable standard practices.

1. Finish Repair (For 113T1721-7, -8 only), (IPL Fig. 1)

- A. Reactivate primed surfaces per SOPM 20-41-02.
- B. Reactivate enamel surfaces:
  - (1) Solvent clean panel surface with wipers wet with a series 86 solvent.
  - (2) Lightly sand surface with #180 or finer grit abrasive. Be sure to remove the gloss.
  - (3) Clean with clean wipers wet with a series 86 solvent.
  - (4) Wipe dry with a wiper.
- C. Mix BMS 5-95, Class F, sprayable sealant 15 to 1 by weight or 100 to 6.9 by volume and thin 20% with a solution of 50/50 MEK/Toluene.

NOTE: The pot life is approximately 1 1/2 hours at 75°F.

- D. With an air spray at 50 psi minimum, apply two layers of BMS 5-95, Class F (each layer to be approximately 5-8 mils wet film thickness to get a dry film thickness of 6-10 mils) to the exterior surface of the panel. Apply each layer in continuous multiple passes. Increase the air spray pressure as necessary to let you spray the material. Let each layer dry 15 to 30 minutes.
- E. The following alternates may be used for application of BMS 5-95, Class F.
  - (1) Apply per step 1.D. except apply 4 coats approximately 3-5 mils wet thickness per coat.
  - (2) Mix, thin, and apply by any method which results in 6-10 mils dry film thickness of BMS 5-95, Class F.

NOTE: Procedure must be validated by dry film measurement of samples prior to use.

**57-26-11**

REPAIR 3-1

01.1

Page 601

Nov 01/05

F. Allow BMS 5-95, Class F to dry at 60°F to 90°F for 2 hours minimum and 72 hours maximum.

G. Apply BMS 10-60, Type II per operators standard color scheme (F-19.39-XXXX). Allow 2 to 3 coats to attain a dry film thickness of 2-4 mils.

NOTE: It is optional to prime BMS 5-95, Class F, with BMS 10-79, Type II prior to applying BMS 10-60, Type II.

H. Allow the top coat to cure for a minimum of 3 hours at 60°F minimum.

I. Installation screw heads:

For assemblies sealed after installation screw heads may be covered.

For assemblies sealed before installation screw heads can be unsealed.

**57-26-11**

REPAIR 3-1

01.1

Page 602

Oct 10/85



PUSHROD ASSEMBLY – REPAIR 4-1

113T1732-1

**NOTE:** Refer to REPAIR – GENERAL for a list of applicable standard practices.

1. Rod End Replacement (IPL Fig. 2)

- A. Remove rod end (5)
- B. Install rod end (5) as shown in (Fig. 601).

2. Refinish

- A. Tube (20) -- Apply one coat of BMS 10-11, Type 1 primer (F-20.02) and apply one coat of BMS 10-60, BAC 707 gray gloss enamel (SRF 14.9813). Make sure that drain and witness hole are not clogged by primer or paint.  
Material: 15-5PH CRES.

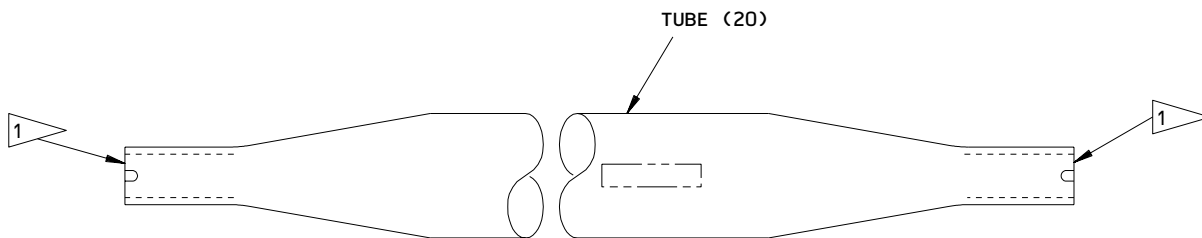
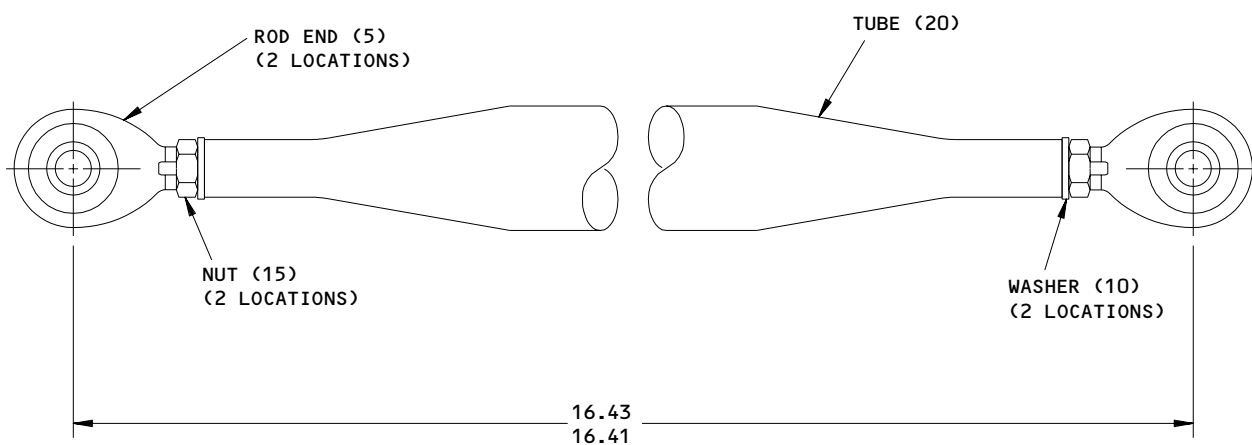
57-26-11

REPAIR 4-1

01.1

Page 601

Nov 01/05



**PUSHROD ASSEMBLY**

1 COAT THREADS WITH A THIN COAT OF MIL-G-23827 GREASE BEFORE INSTALLATION OF ROD ENDS.

ITEM NUMBERS REFER TO IPL FIG. 2  
 ALL DIMENSIONS ARE IN INCHES

113T1732-1  
 Rod End Replacement  
 Figure 601

**57-26-11**  
 REPAIR 4-1  
 Page 602  
 Nov 01/05

01.1

ASSEMBLY1. Materials

NOTE: Equivalent substitutes may be used.

- A. Adhesive -- Type 60 (Ref 20-50-12)
- B. Enamel -- BMS 10-11, type 2, BAC701 black gloss (Ref 20-60-02)
- C. Grease -- BMS 3-24 (Ref 20-60-03)
- D. Lockwire -- MS20995 (Ref 20-50-02)
- E. Primer -- BMS 10-11, type 1 (Ref 20-60-02)
- F. Silicone -- BMS 1-23 (Ref 20-60-04)

2. Assembly

- A. Use standard industry practices for assembly of this component and the following additional procedures.
- B. Install bearing retainer (160, IPL Fig. 1) into frame assembly (165, 170) per 20-50-03 prior to installation of bearing (145).
- C. Apply thin layer of BMS 3-24 grease to shank of bolt (201A) prior to installation into frame assembly (209, 210).
- D. A maximum gap of 0.005 inch is permitted between frame assemblies (165,170,209,210) and seal retainers (50A,55A,94,94G) prior to installation of shims (80,85). Apply one coat of BMS 10-11, type 1 primer to shims (80,85) after delamination.
- E. Reinforce splice joints between seals (10, 27A) and seals (15, 25) with a 1 inch long insert of BMS 1-23 using type 60 adhesive per 20-50-12.
- F. Bond plug (29J) to seals (27A, 29V) and bond plug (29G) to seal (29) using type 60 adhesive per 20-50-12.
- G. Install jumper per 20-11-03 and check for a maximum bond resistance of 0.001 ohm.
- H. Install lockwire approximately 0.25 inch from each end of seal retainers (50A,55A,94,94G) and twist pigtail per 20-50-02.

**57-26-11**ASSEMBLY  
Page 701  
Nov 01/05

01.1

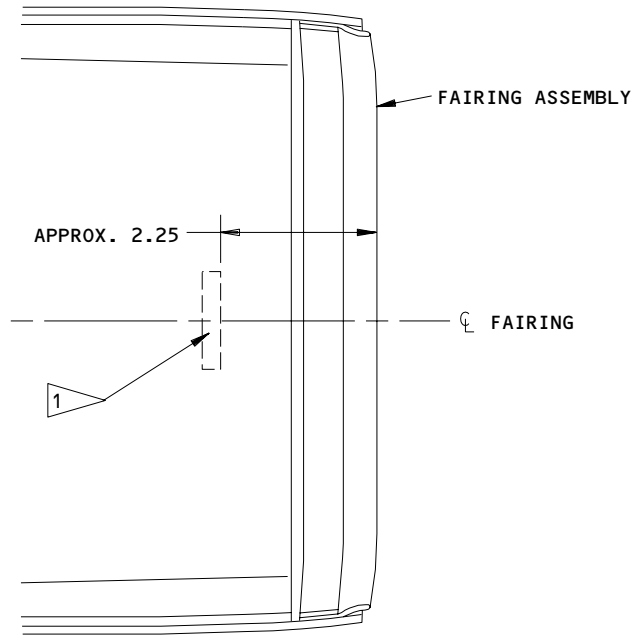


- I. Stencil identification numbers on central movable assemblies using BMS 10-11, Type 2 black gloss enamel per 20-50-10 as shown (Fig. 701).

**57-26-11**

ASSEMBLY  
Page 702  
Nov 01/05

01.1



1 STENCIL NUMBER "571DB" ON FAIRING ASSEMBLY (1B,1C,1D,1E,1F) AND NUMBER "671D8" ON FAIRING ASSEMBLY (5B,5C,5D,5E,5F) USING 0.50 INCH HIGH LETTERING

ALL DIMENSIONS ARE IN INCHES

Stencil Identification  
 Figure 701

**57-26-11**

ASSEMBLY  
 Page 703  
 Nov 01/05

01.1



ILLUSTRATED PARTS LIST

1. This section lists and illustrates replaceable or repairable component parts. The Illustrated Parts Catalog contains a complete explanation of the Boeing part numbering system.
2. Indentures show parts relationships as follows:

Assembly

Detail Parts for Assembly

Subassembly

Attaching Parts for Subassembly

Detail Parts for Subassembly

Detail Installation Parts (Included only if installation parts may be returned to shop as part of assembly)

3. One use code letter (A, B, C, etc.) is assigned in the EFF CODE column for each variation of top assembly. All listed parts are used on all top assemblies except when limitations are shown by use code letter opposite individual part entries.
4. Letter suffixes (alpha-variants) are added to item numbers for optional parts, Service Bulletin modification parts, configuration differences (except left- and right-hand parts), product improvement parts, and parts added between two sequential item numbers. The alpha-variant is not shown on illustrations when appearance and location of all variants of the part is the same.
5. Service Bulletin modifications are shown by the notations PRE SB XXXX and POST SB XXXX.
  - A. When a new top assembly part number is assigned by Service Bulletin, the notations appear at the top assembly level only. The configuration differences at detail part level are then shown by use code letter.
  - B. When the top assembly part number is not changed by the Service Bulletin, the notations appear at the detail part level.

6. Parts Interchangeability

Optional  
(OPT)

The parts are optional to and interchangeable with other parts having the same item number.

Supersedes, Superseded By  
(SUPSDS, SUPSD BY)

The part supersedes and is not interchangeable with the original part.

Replaces, Replaced By  
(REPLS, REPLD BY)

The part replaces and is interchangeable with, or is an alternate to, the original part.

**57-26-11**

ILLUSTRATED PARTS LIST

01

Page 1001

Jul 10/83

**7. Boeing Proprietary Color Coded Parts**

- A. Color coded parts are identified with an alpha "SP" suffix. This entry represents consolidation of all color codes applicable for a given usage. Orders for color coded parts should include the registry number of the airplane for which the parts are ordered."

**57-26-11**ILLUSTRATED PARTS LIST  
01.1 Page 1002  
Jan 01/94


**BOEING**  
 COMPONENT  
 MAINTENANCE MANUAL
VENDORS

S0352 NIPPON MINIATURE BEARING CO LTD  
TOKYO, JAPAN

OPTK6 SPS TECHNOLOGIES INC AEROSPACE PRODUCTS DIV  
5195 W 4700  
SALT LAKE CITY, UTAH 94118  
SEE V56878 SPS TECHNOLOGIES INC

06725 AIR INDUSTRIES CORPORATION  
12570 KNOTT STREET  
GARDEN GROVE, CALIFORNIA 92641-3932  
FORMERLY AIR INDUSTRIES OF CALIF IN GARDENA, CALIF.

06950 SCREWCORP VSI AEROSPACE PRODUCTS DIV FAIRCHILD IND DIV  
13001 EAST TEMPLE AVENUE PO BOX 730  
CITY OF INDUSTRY, CALIFORNIA 91746-1417  
FORMERLY VB0096 AND VSI CORP SCREWCORP DIV  
FORMERLY IN CULVER CITY, CALIFORNIA

07484 ACCURATE BUSHING CO INC  
443 NORTH AVENUE  
GARWOOD, NEW JERSEY 07027-1014  
FORMERLY V83132 SMITH BRG DIV OF ACCURATE BUSHING CO

11815 CHERRY AEROSPACE FASTENERS DIV OF TEXTRON  
1224 EAST WARNER AVENUE PO BOX 2157  
SANTA ANA, CALIFORNIA 92707-0157  
FORMERLY IN LOS ANGELES, CALIF, FORMERLY CHERRY FASTENERS  
TOWNSEND DIV OF TEXTRON INC V71087

15653 ALOCA GLOBAL FASTEMERS INC DIV KAYNARE PRODUCTS  
800 S STATE COLLEGE BLVD  
FULLERTON, CALIFORNIA 92831-3001  
FORMERLY VK6405 MICRODOT AEROSP LTD; FORMERLY KAYNAR TECH  
FORMERLY FAIRCHILD FASTENERS KAYNAR DIV

15860 NEW HAMPSHIRE BALL BEARINGS, INC ASTRO DIVISION  
155 LEXINGTON AVENUE  
LACONIA, NEW HAMPSHIRE 03246-2937  
FORMERLY ASTRO BEARING CORP, LOS ANGELES, CALIF.

16746 SPECLINE INCORPORATED  
2230 MOUTON DR  
CARSON CITY, NV 89706  
FORMERLY IN SUN VALLEY, CAIFORNIA

**57-26-11**
 ILLUSTRATED PARTS LIST  
 01.1 Page 1003  
 Nov 01/05

VENDORS

5M902 ALCOA GLOBAL FASTENERS INC, DIV OF VOI-SHAN PRODUCTS  
3000 W LOMITA BLVD  
TORRANCE, CALIFORNIA 90505-5103  
FORMERLY FAIRCHILD INC INC FAIRCHILD AEROSPACE FASTENERS DIV

50294 NEW HAMPSHIRE BALL BEARINGS, INC PRECISION DIVISION  
9700 INDEPENDENCE AVENUE  
CHATSWORTH, CALIFORNIA 91311  
FORMERLY NIPPON MINATURE BEARING CORP V23589 AND NMB  
AMERICA INC AND NMB INC

52825 HOFFMAN CAMERA CORP  
19 GRAND AVENUE  
FARMINGTON, NEW YORK 11735-6315

52828 REPUBLIC FASTENER MFG CORP  
1300 RANCHO CONEJO BLVD  
NEWBURY PARK, CALIFORNIA 91320-1405  
FORMERLY IN SYLMAR, CALIFORNIA

56644 AURORA BEARING CO  
970 SOUTH LAKE STREET  
AURORA, ILLINOIS 60506-5929

56878 SPS TECHNOLOGIES INC AEROSPACE AND INDUSTRIAL PRODUCTS DIV  
301 HIGHLAND AVE  
JENKINTOWN, PENNSYLVANIA 19046  
FORMERLY STANDARD PRESSED STEEL

60380 TORRINGTON CO BEARINGS DIV SUBSIDIARY OF INGERSOLL-RAND CORP  
59 FIELD STREET PO BOX 1008  
TORRINGTON, CONNECTICUT 06790-1008  
FORMERLY TORRINGTON BEARING COMPANY

71087 BOOTS ACFT NUT DIV TOWNSEND CO SEE TEXTRON INC CHERRY  
FASTENER TOWNSEND DIV V11815

72962 HARVARD INDUSTRIES INC  
3 WERNER WAY SUITE 210  
LEBANON, NEW JERSEY 08833  
FORMERLY ESNA V7A079  
FORMERLY ELASTIC STOP NUT IN UNION, NJ

73134 ROLLER BEARING COMPANY OF AMER DBA HEIM BEARINGS DIV  
60 ROUND HILL RD  
FAIRFIELD, CONNECTICUT 06430-0000  
FORMERLY INCOM INTL HEIM DIV; HEIM UNIVERSAL CORP INCOM;  
FORMERLY HEIM DIV INCOM INTL; IMO IND HEIM BEARINGS DIV

57-26-11

ILLUSTRATED PARTS LIST  
01.1 Page 1004  
Nov 01/05

**BOEING**  
COMPONENT  
MAINTENANCE MANUALVENDORS

73197 HI-SHEAR TECHNOLOGY CORP  
2600 SKYPARK DRIVE  
TORRANCE, CALIFORNIA 90509

80539 SPS TECHNOLOGIES INC DIV AERPSOACE - SANTA ANA  
2701 SOUTH HARBOR BOULEVARD  
SANTA ANA, CALIFORNIA 92704-5803  
FORMERLY NUTT-SHEL DIV OF SPC WESTERN CO V80539  
AND STANDARD PRESSED STEEL WESTERN DIV V17279

81376 SMITH ACQUISITION COMPANY  
2240 BUENA VISTA  
BALDWIN PARK, CALIFORNIA 91706

9N513 VOI SHAN/CHATSWORTH DIV OF VSI CORP SUB OF FAIRCHILD IND  
CHATSWORTH, CALIFORNIA 91311-5013  
COMPANY NO LONGER WISHES TO BE CONSIDERED FOR FED CONTRCTG

92215 FAIRCHILD IND INC FAIRCHILD AEROSPACE FASTENER DIV  
3010 W LOMITA BLVD  
TORRANCE, CALIFORNIA 90505-5102  
FORMERLY VOI-SHAN IN CULVER CITY, CALIF

92563 MCGILL MFG CO INC BEARINGS DIV  
909 LAFAYETTE STREET  
VALPARAISO, INDIANA 46383-4210

97928 SEE V17446 HUCK INTL  
HUCK INTL SEE V17446 HUCK INTL  
SEE V17446 HUCK INTL

**57-26-11**ILLUSTRATED PARTS LIST  
01.1 Page 1005  
Nov 01/05

PART NUMBER	AIRLINE PART NO.	FIG.	ITEM	TTL REQ
ADNE5-311NW9		2	5	2
AN960C616		1	204	1
AN960XC10L		1	75	20
		1	77	21
AN960XC8L		1	29N	5
ARNM5-101KM		2	5	2
ASB12-101		1	145C	2
ASSB12-37		1	145C	2
ASSB12-46		1	145D	2
ATF6		1	207	1
BACB10ET06		1	207	1
BACB10HH06C		1	207A	1
BACB28AK06-049		1	206	1
BACB28AM07B025		1	225	1
BACB28AM09B025A		1	230	1
BACB28AP05P025		1	235	1
BACB28AP06P025		1	240	1
BACB30LH2-4		1	29M	5
BACB30LH3P6		1	150A	10
BACB30LJ6-22		1	201A	1
BACB30LR3P4		1	150	10
BACB30LU2-4		1	29L	5
BACB30NN3K3		1	60	30
		1	105A	23
		1	140	4
BACB30NN3K4		1	105	23
BACB30NN3K5		1	70	2
BACB30NN3K7		1	65	4
BACB30NN3K9		1	63A	5
BACB30VT5HK6		1	24K	2
BACB30VT5HK7		1	24B	1
BACB30VT5K6		1	24H	2
BACB30VT5K7		1	24	1
BACC30BL5		1	24R	3
BACN10JC08		1	29Q	5
BACN10JC08CD		1	29R	5
BACN10JC3		1	90	41
BACN10JC3CD		1	90A	41
BACN10JC6		1	205	1
BACN10JC6CD		1	205A	1
BACN10JN3		1	110C	23
BACN10KE3B2		1	110	23
		1	265	4
BACN10YF32		1	110A	23
BACR15BA3AD		1	115	46
		1	270	8

57-26-11

 ILLUSTRATED PARTS LIST  
 01.1 Page 1006  
 Nov 01/05




**BOEING**  
 COMPONENT  
 MAINTENANCE MANUAL

PART NUMBER	AIRLINE PART NO.	FIG.	ITEM	TTL REQ
BACR15BA6AD		1	175	20
		1	215	34
BACR15BA6ADC		1	175A	20
		1	215A	34
BACR15BA8AD		1	185	5
BACS40R008C011F		1	85A	2
BACS40R008C022F		1	80A	2
BACW10BP6AC		1	202	2
BACW10BP6CD		1	202A	2
BLP12F245		1	145D	2
BRFM20A3		1	110C	23
BRFR220A3-2		1	110	23
		1	265	4
BRH10A08		1	29Q	5
BRH10A3		1	90	41
BRH10A6		1	205	1
BRH10C3D		1	90A	41
BRH10C6D		1	205A	1
F51750-3-2		1	110	23
		1	265	4
HST10AG5-6		1	24H	2
HST10AG5-7		1	24	1
HST79-5		1	24R	3
HST79CY5		1	24R	3
H10-08BAC		1	29Q	5
H10-3BAC		1	90	41
H10-6BAC		1	205	1
H51650-3BAC		1	90A	41
H51650-6BAC		1	205A	1
LHCB12BA		1	145C	2
LHCB12BAC		1	145D	2
MF1000-3BAC		1	110C	23
MF19058-3-2BAC		1	110A	23
MF53049-3		1	110C	23
MSSRRSK05FBDF		2	5	2
MS15001-1		1	190	2
MS15001-3		1	193	2
MS20427M5C		1	91	14
NAS1149CN816B		1	29P	5
NAS1149C0332B		1	75A	20
NAS1149E0332P		1	77A	21
NAS1149E0663P		1	204A	1
NAS1399D8A5		1	188B	2
NAS1399D8A6		1	182	3
NAS1399D8A8		1	188	2

57-26-11

 ILLUSTRATED PARTS LIST  
 01.1 Page 1007  
 Nov 01/05

PART NUMBER	AIRLINE PART NO.	FIG.	ITEM	TTL REQ
NAS1399MW6-6		1	180A	2
		1	220A	2
NAS1399MW6A6		1	180B	2
		1	220B	2
NAS509-6		2	15	2
NAS513-6		2	10	2
NC12-7		1	145D	2
NS103191-02-2		1	110	23
		1	265	4
NS103218-02		1	110C	23
NS202101-02		1	90	41
NS202101-82		1	29Q	5
NS202486-02		1	90A	41
RMF9201M3		1	110C	23
RMF9213-2-3		1	110	23
		1	265	4
RMLH9075-3W		1	90	41
RMLH9075-6		1	205	1
RMLH9075-82W		1	29Q	5
SWRKMS5-370		2	5	2
S012T235-105-79		2	5	2
T6C1032JCD		1	90A	41
T6S1032J		1	90	41
T6S832J		1	29Q	5
VL310AG5-6		1	24K	2
VL310AG5-7		1	24B	1
VN252A02		1	110C	23
VN303A02		1	90	41
VN303A82		1	29Q	5
YAF06B		1	207	1
102LH9075-3W		1	90A	41
113T1256-26		1	146	4
113T1256-61		1	146A	4
113T1267-10		1	160	2
113T1267-9		1	155	2
113T1714-10		1	135	1
113T1714-21		1	120A	1
113T1714-22		1	125A	1
113T1714-23		1	130A	1
113T1714-24		1	135A	1
113T1714-7		1	120	1
113T1714-8		1	125	1
113T1714-9		1	130	1
113T1720-10		1	35	1
113T1720-100G		1	5Q	RF
113T1720-101G		1	1R	RF

# 57-26-11

 ILLUSTRATED PARTS LIST  
 01.1 Page 1008  
 Nov 01/05


**BOEING**  
 COMPONENT  
 MAINTENANCE MANUAL

PART NUMBER	AIRLINE PART NO.	FIG.	ITEM	TTL REQ
113T1720-102G		1	5R	RF
113T1720-103		1	97B	1
113T1720-104		1	98A	1
113T1720-105		1	26A	1
113T1720-107G		1	1S	RF
113T1720-108G		1	5S	RF
113T1720-109		1	95E	1
113T1720-11		1	95	1
113T1720-110		1	96A	1
113T1720-111		1	97C	1
113T1720-112		1	98B	1
113T1720-12		1	30	1
113T1720-15		1	20	1
113T1720-16		1	25	1
113T1720-29		1	100A	1
113T1720-30		1	35A	1
113T1720-31		1	95A	1
113T1720-32		1	30A	1
113T1720-33		1	94	1
113T1720-34		1	94G	1
113T1720-35		1	27A	1
113T1720-36		1	28A	1
113T1720-37		1	92	1
113T1720-38		1	93	1
113T1720-39		1	29V	1
113T1720-41		1	57	1
113T1720-42		1	59	1
113T1720-43		1	29	1
113T1720-45		1	29S	1
113T1720-47SP		1	1B	RF
113T1720-48SP		1	5B	RF
113T1720-49		1	1C	RF
113T1720-5		1	10	1
113T1720-50		1	5C	RF
113T1720-51		1	29G	2
113T1720-52		1	29J	4
113T1720-53SP		1	1D	RF
113T1720-54SP		1	5D	RF
113T1720-57		1	1F	RF
113T1720-58		1	5F	RF
113T1720-59		1	50A	1
113T1720-6		1	15	1
113T1720-60		1	55A	1
113T1720-61		1	1G	RF
113T1720-62		1	5G	RF

57-26-11

ILLUSTRATED PARTS LIST

01.1

Page 1009

Nov 01/05

PART NUMBER	AIRLINE PART NO.	FIG.	ITEM	TTL REQ
113T1720-65		1	1H	RF
113T1720-66		1	5H	RF
113T1720-67		1	97	1
113T1720-68		1	33	1
113T1720-69		1	1J	RF
113T1720-7		1	85	2
113T1720-70		1	5J	RF
113T1720-73		1	26	1
113T1720-77		1	95D	1
113T1720-78		1	96	1
113T1720-79		1	97A	1
113T1720-8		1	80	2
113T1720-80		1	98	1
113T1720-83		1	25A	1
113T1720-84		1	20A	1
113T1720-85		1	29W	1
113T1720-87		1	50B	1
113T1720-88		1	55B	1
113T1720-89		1	94A	1
113T1720-9		1	100	1
113T1720-90		1	94H	1
113T1720-91		1	57A	1
113T1720-92		1	59A	1
113T1720-93		1	1M	RF
113T1720-94		1	5M	RF
113T1720-95		1	1N	RF
113T1720-96		1	5N	RF
113T1720-97		1	1P	RF
113T1720-98		1	5P	RF
113T1720-99G		1	1Q	RF
113T1721-10		1	280A	1
113T1721-13		1	255B	1
113T1721-14		1	260B	1
113T1721-15		1	275B	1
113T1721-16		1	280B	1
113T1721-19		1	255C	1
113T1721-20		1	260C	1
113T1721-21		1	275C	1
113T1721-22		1	280C	1
113T1721-25		1	285	1
113T1721-26		1	290	1
113T1721-27		1	255D	1
113T1721-28		1	260D	1
113T1721-29		1	275D	1
113T1721-32		1	280D	1

# 57-26-11

 ILLUSTRATED PARTS LIST  
 01.1 Page 1010  
 Nov 01/05

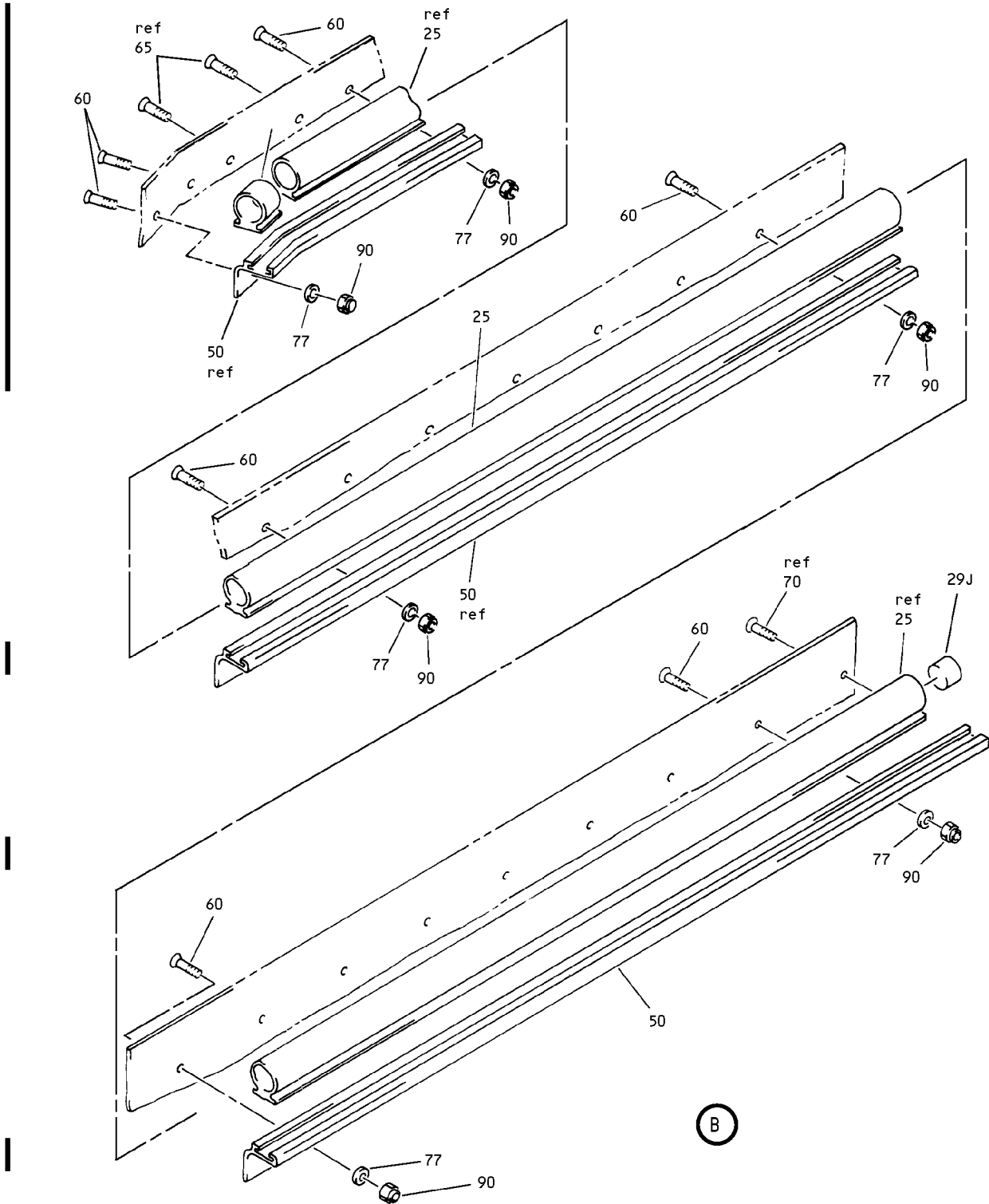

**BOEING**  
 COMPONENT  
 MAINTENANCE MANUAL

PART NUMBER	AIRLINE PART NO.	FIG.	ITEM	TTL REQ
113T1721-7		1	255A	1
113T1721-8		1	260A	1
113T1721-9		1	275A	1
113T1722-1		1	165	1
113T1722-10		1	200A	1
113T1722-11		1	195B	1
113T1722-12		1	200B	1
113T1722-2		1	170	1
113T1722-5		1	195	1
113T1722-6		1	200	1
113T1722-7		1	165A	1
113T1722-8		1	170A	1
113T1722-9		1	195A	1
113T1724-1		1	209	1
113T1724-10		1	250A	1
113T1724-17		1	209A	1
113T1724-18		1	210A	1
113T1724-19		1	245B	1
113T1724-2		1	210	1
113T1724-20		1	250B	1
113T1724-21		1	245C	1
113T1724-22		1	250C	1
113T1724-5		1	245	1
113T1724-6		1	250	1
113T1724-9		1	245A	1
113T1732-1		1	8	RF
		2	1A	RF
113T1732-2		2	20	1
6AFC817		1	207	1
60B00180-242		1	145C	2
60B00180-245		1	145D	2
96-02		1	90	41
96-064		1	205	1
96-82		1	29Q	5

57-26-11

 ILLUSTRATED PARTS LIST  
 01.1 Page 1011  
 Nov 01/05





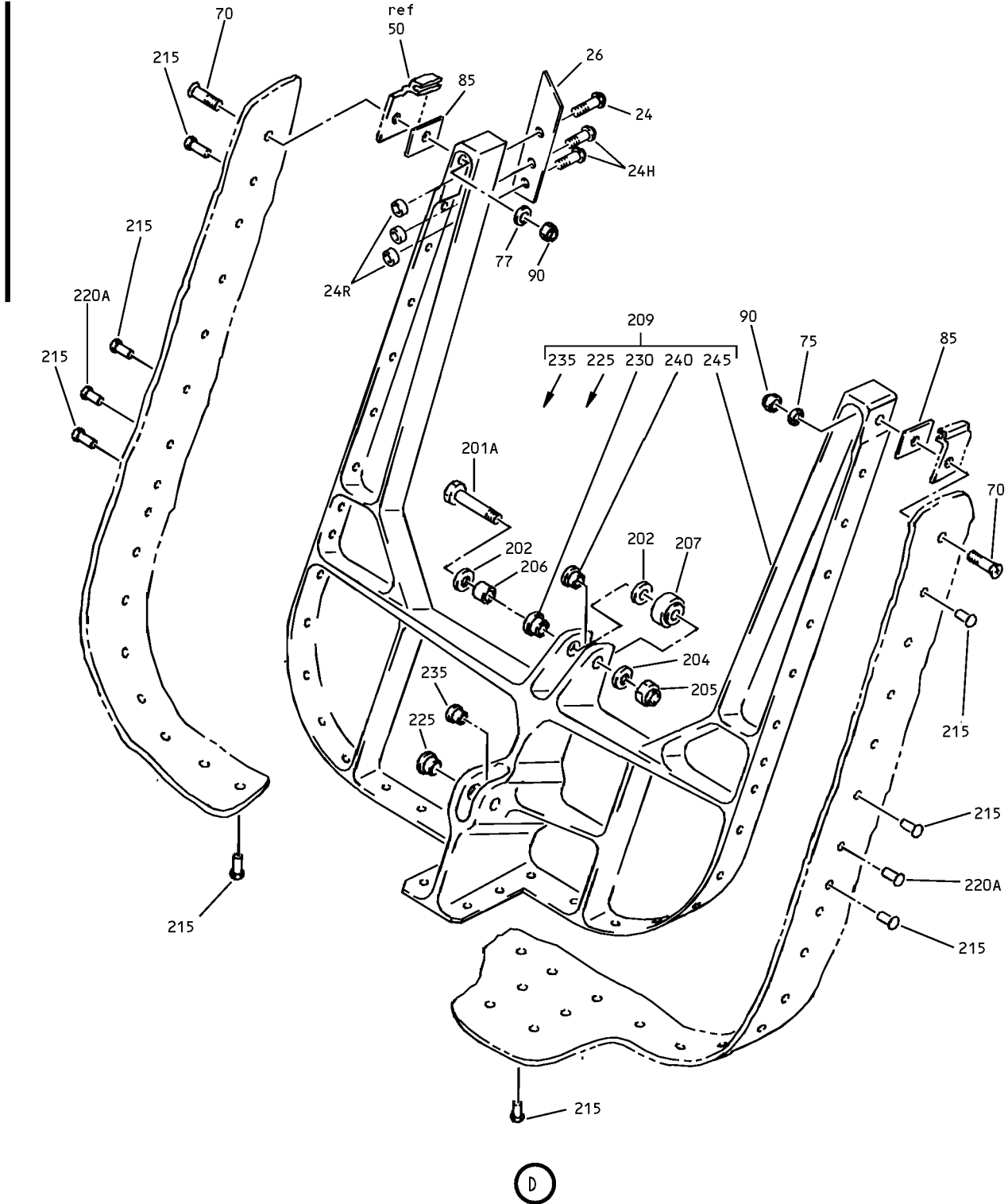
No. 3 Fairing Inboard Trailing Edge Flap Moveable Assembly  
 Figure 1 (Sheet 2)

**57-26-11**

ILLUSTRATED PARTS LIST  
 01.1 Page 1014  
 Nov 01/05



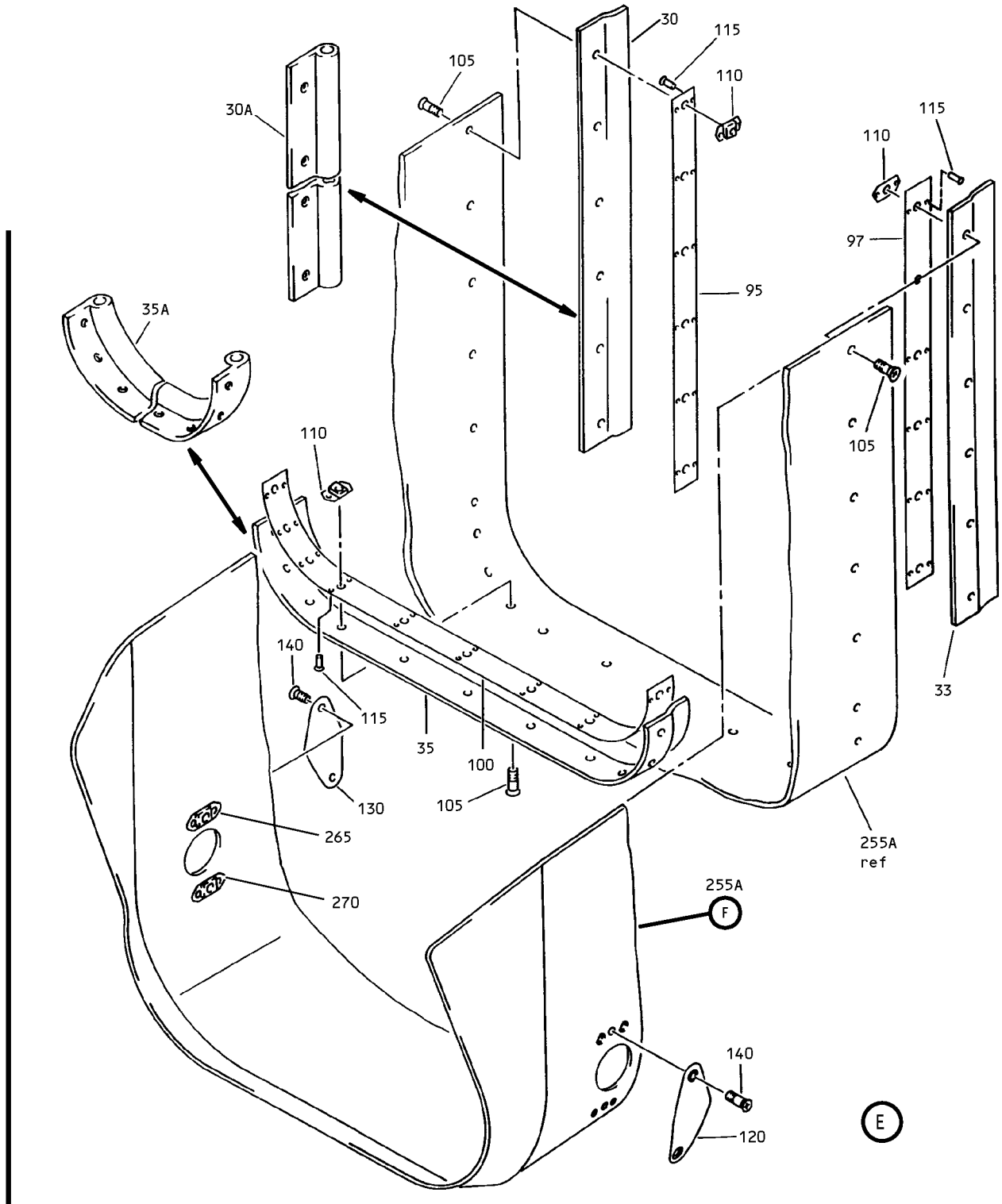




No. 3 Fairing Inboard Trailing Edge Flap Moveable Assembly  
 Figure 1 (Sheet 4)

**57-26-11**

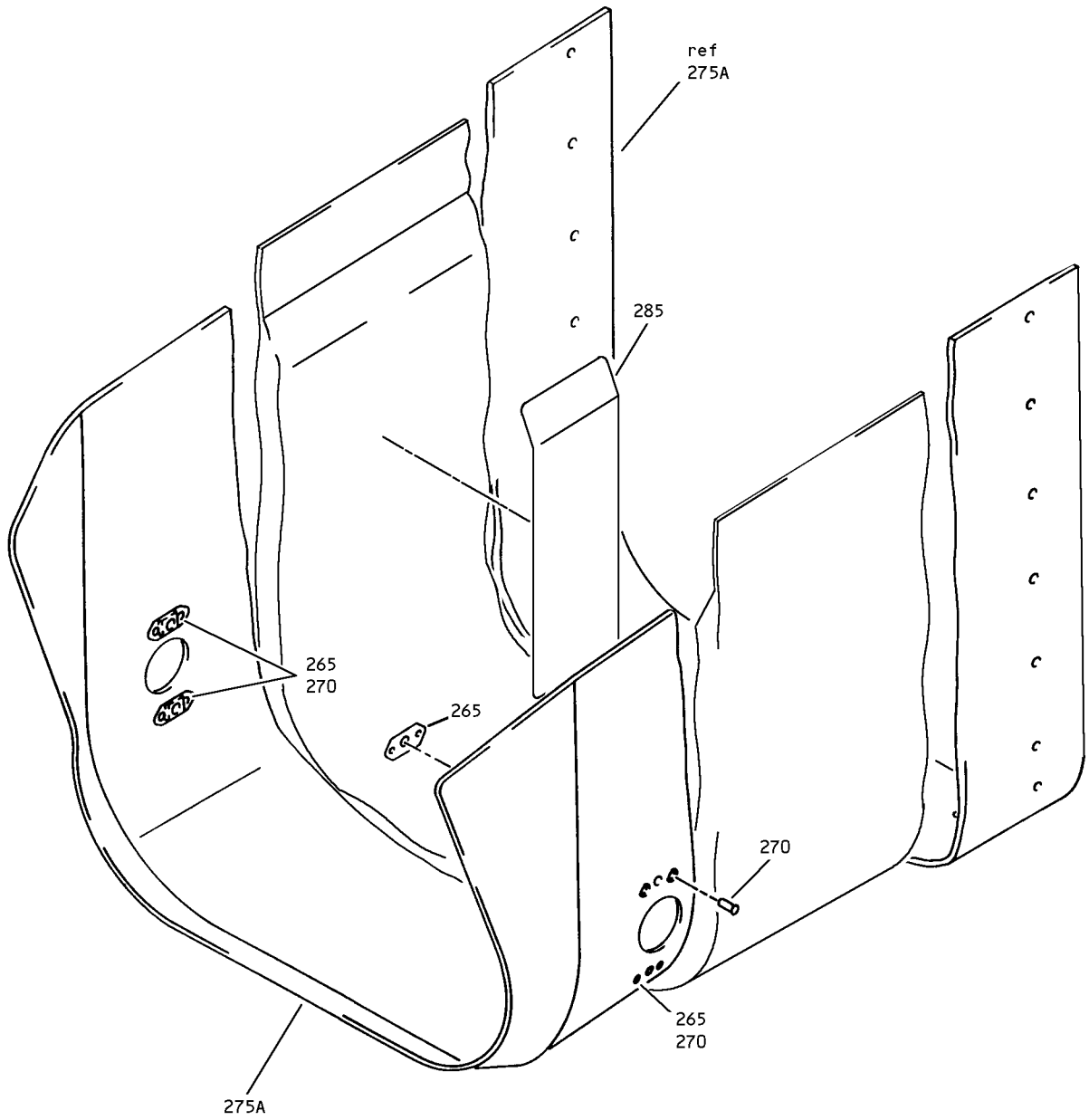
ILLUSTRATED PARTS LIST  
 01.1 Page 1016  
 Nov 01/05



No. 3 Fairing Inboard Trailing Edge Flap Moveable Assembly  
Figure 1 (Sheet 5)

**57-26-11**

ILLUSTRATED PARTS LIST  
01.1 Page 1017  
Nov 01/05



No. 3 Fairing Inboard Trailing Edge Flap Moveable Assembly  
Figure 1 (Sheet 6)

**57-26-11**

ILLUSTRATED PARTS LIST  
01.1 Page 1018  
Nov 01/05


**BOEING**  
 COMPONENT  
 MAINTENANCE MANUAL

FIG. & ITEM	PART NO.	AIRLINE PART NUMBER	NOMENCLATURE 1234567	EFF CODE	QTY PER ASSY
01-					
-1	113T1720-1SP		DELETED		
-1A	113T1720-17SP		DELETED		
-1B	113T1720-47SP		MOVEABLE ASSY-NO. 3 FAIRING INBD TE FLAP CTR	A	RF
-1C	113T1720-49		MOVEABLE ASSY-NO. 3 FAIRING INBD TE FLAP CTR (VARIABLE)	B	RF
-1D	113T1720-53SP		MOVEABLE ASSY-NO. 3 FAIRING INBD TE FLAP CTR	E	RF
-1E	113T1720-55		DELETED		
R -1F	113T1720-57		MOVEABLE ASSY-NO. 3 FAIRING INBD TE FLAP CTR (VARIABLE)	F	RF
R -1G	113T1720-61		MOVEABLE ASSY-NO. 3 FAIRING INBD TE FLAP CTR	J	RF
R -1H	113T1720-65		MOVEABLE ASSY-NO. 3 FAIRING INBD TE FLAP CTR (VARIABLE)	K	RF
R -1J	113T1720-69		MOVEABLE ASSY-NO. 3 FAIRING INBD TE FLAP CTR	N	RF
-1K	113T1720-75		DELETED		
-1L	113T1720-81		DELETED		
R -1M	113T1720-93		MOVEABLE ASSY-NO. 3 FAIRING INBD TE FLAP CTR	U	RF
R -1N	113T1720-95		MOVEABLE ASSY-NO. 3 FAIRING INBD TE FLAP CTR	V	RF
R -1P	113T1720-97		MOVEABLE ASSY-NO. 3 FAIRING INBD TE FLAP CTR	W	RF
R -1Q	113T1720-99G		MOVEABLE ASSY-NO. 3 FAIRING INBD TE FLAP CTR	R	RF
R -1R	113T1720-101G		MOVEABLE ASSY-NO. 3 FAIRING INBD TE FLAP CTR	T	RF
R -1S	113T1720-107G		MOVEABLE ASSY-NO. 3 FAIRING INBD TE FLAP CTR	AB	RF
-5	113T1720-2SP		DELETED		
-5A	113T1720-18SP		DELETED		
-5B	113T1720-48SP		MOVEABLE ASSY-NO.3 FAIRING INBD TE FLAP CTR	C	RF
-5C	113T1720-50		MOVEABLE ASSY-NO. 3 FAIRING INBD TE FLAP CTR (VARIABLE)	D	RF
-5D	113T1720-54SP		MOVEABLE ASSY-NO.3 FAIRING INBD TE FLAP CTR	G	RF
-5E	113T1720-56		DELETED		

57-26-11

ILLUSTRATED PARTS LIST

01.1

Page 1019

Nov 01/05

FIG. & ITEM	PART NO.	AIRLINE PART NUMBER	NOMENCLATURE 1234567	EFF CODE	QTY PER ASSY
R 01-5F	113T1720-58		MOVEABLE ASSY-NO. 3 FAIRING INBD TE FLAP CTR (VARIABLE)	H	RF
R -5G	113T1720-62		MOVEABLE ASSY-NO. 3 FAIRING INBD TE FLAP CTR	L	RF
R -5H	113T1720-66		MOVEABLE ASSY-NO. 3 FAIRING INBD TE FLAP CTR (VARIABLE)	M	RF
R -5J	113T1720-70		MOVEABLE ASSY-NO. 3 FAIRING INBD TE FLAP CTR	P	RF
-5K	113T1720-76		DELETED		
-5L	113T1720-82		DELETED		
R -5M	113T1720-94		MOVEABLE ASSY-NO. 3 FAIRING INBD TE FLAP CTR	X	RF
R -5N	113T1720-96		MOVEABLE ASSY-NO. 3 FAIRING INBD TE FLAP CTR	Y	RF
R -5P	113T1720-98		MOVEABLE ASSY-NO. 3 FAIRING INBD TE FLAP CTR	Z	RF
R -5Q	113T1720-100G		MOVEABLE ASSY-NO. 3 FAIRING INBD TE FLAP CTR	S	RF
R -5R	113T1720-102G		MOVEABLE ASSY-NO. 3 FAIRING INBD TE FLAP CTR	AA	RF
R -5S	113T1720-108G		MOVEABLE ASSY-NO. 3 FAIRING INBD TE FLAP CTR	AC	RF
R -8	113T1732-1		ROD ASSY-PUSH (FOR DETAILS SEE FIG. 2)	Q	RF
10	113T1720-5		.SEAL-BULB (MFD FROM EXTR RUBBER F25.01 10-60754-718 0.90 IN.)	A-P, R-AC	1
15	113T1720-6		.SEAL-BULB (MFD FROM EXTR RUBBER F25.01 10-60754-718 0.90 IN.)	A-P, R-AC	1
-20	113T1720-15		.SEAL-BULB (MFD FROM EXTR RUBBER F25.01 10-60754-718 56.00 IN.)	C,D,G ,H,L, M,P,X ,Y	1
R -20A	113T1720-84		.SEAL-BULB (MFD FROM EXTR RUBBER F25.01 10-60754-279 56.00 IN)	S,Z,A A,AC	1

57-26-11

 ILLUSTRATED PARTS LIST  
 01.1 Page 1020  
 Nov 01/05


**BOEING**  
 COMPONENT  
 MAINTENANCE MANUAL

FIG. & ITEM	PART NO.	AIRLINE PART NUMBER	NOMENCLATURE 1234567	EFF CODE	QTY PER ASSY
R 01-24	HST10AG5-7		.BOLT- (VOPTK6) (SPEC BACB30VT5K7) (OPT HST10AG5-7 (V06725)) (OPT HST10AG5-7 (V56878)) (OPT HST10AG5-7 (V73197))	K,M-P ,U-Z, AB,AC	1
R -24A	HST10AG5-7		.BOLT- (VOPTK6) (SPEC BACB30VT5K7) (OPT HST10AG5-7 (V06725)) (OPT HST10AG5-7 (V56878)) (OPT HST10AG5-7 (V73197)) (PRE SB 767-57-0087)	R,S	1
R -24B	VL310AG5-7		.BOLT- (V97928) (SPEC BACB30VT5HK7) (OPT VL310AG5-7 (V9N513)) (OPT VL310AG5-7 (V06950)) (POST SB 767-57-0087)	R,S	1
R 24H	HST10AG5-6		.BOLT- (VOPTK6) (SPEC BACB30VT5K6) (OPT HST10AG5-6 (V06725)) (OPT HST10AG5-6 (V56878)) (OPT HST10AG5-6 (V73197))	K,M-P ,U-Z, AB,AC	2

57-26-11

ILLUSTRATED PARTS LIST

01.1

Page 1021

Nov 01/05

FIG. & ITEM	PART NO.	AIRLINE PART NUMBER	NOMENCLATURE 1234567	EFF CODE	QTY PER ASSY
R 01- -24J	HST10AG5-6		.BOLT- (VOPTK6) (SPEC BACB30VT5K6) (OPT HST10AG5-6 (V06725)) (OPT HST10AG5-6 (V56878)) (OPT HST10AG5-6 (V73197)) (PRE SB 767-57-0087)	R,S	2
R -24K	VL310AG5-6		.BOLT- (V06950) (SPEC BACB30VT5HK6) (OPT VL310AG5-6 (V9N513)) (OPT VL310AG5-6 (V97928)) (POST SB 767-57-0087)	R,S	2
R 24R	HST79CY5		.COLLAR- (V73197) (SPEC BACC30BL5) (OPT HST79-5 (V92215)) (OPT HST79-5 (V56878)) (OPT HST79-5 (V5M902))	K,M-P ,R,S, U-Z,A B,AC	3
25	113T1720-16		.SEAL-BULB (MFD FROM EXTR RUBBER F25.01 10-60754-718 56.00 IN.)	A,B,E ,F,J, K,N,U ,V	1
R -25A	113T1720-83		.SEAL-BULB (MFD FROM EXTR RUBBER F25.01 10-60754-279 56.00 IN)	R,T,W ,AB	1
R 26	113T1720-73		.BUMPER	K,M-P ,U-Z	1
R -26A	113T1720-105		.BUMPER	T,A A-AC	1
R -26B	113T1720-73		.BUMPER- (PRE SB 767-57-0087)	R,S	1
R -26C	113T1720-105		.BUMPER- (POST SB 767-57-0087)	R,S	1
27	113T1720-21		DELETED		

57-26-11

 ILLUSTRATED PARTS LIST  
 01.1 Page 1022  
 Nov 01/05

**BOEING**  
 COMPONENT  
 MAINTENANCE MANUAL

FIG. & ITEM	PART NO.	AIRLINE PART NUMBER	NOMENCLATURE 1234567	EFF CODE	QTY PER ASSY
01-27A	113T1720-35		.SEAL-BULB (MFD FROM EXTR RUBBER 10-60754-718 37.00 IN.)	A,B,E F,J, K,N,R T-W, AB	1
-28	113T1720-22		DELETED		
-28A	113T1720-36		.SEAL-BULB (MFD FROM EXTR RUBBER 10-60754-718 37.00 IN.)	C,D,G H,L, M,P,S X-AA AC	1
29	113T1720-43		.SEAL- (MFD FROM EXTR RUBBER 10-60754-20 9.10 IN.)	A-P, R-AC	1
29G	113T1720-51		.PLUG- (MFD FROM BMS1-23 .38 DIA X 1.00)	A-P, R-AC	2
29J	113T1720-52		.PLUG- (MFD FROM BMS1-23 .88 DIA X 1.00)	A-P, R-AC	4
29L	BACB30LU2-4		.BOLT	A-P, R-AA	5
R -29M	BACB30LH2-4		.BOLT	AB,AC	5
29N	AN960XC8L		.WASHER	A-P, R-AA	5
R -29P	NAS1149CN816B		.WASHER	AB,AC	5
29Q	H10-08BAC		.NUT- (V15653) (SPEC BACN10JC08) (OPT NS202101-82 (V80539)) (OPT RMLH9075-82W (V72962)) (OPT T6S832J (V71087)) (OPT VN303A82 (V92215)) (OPT 96-82 (V80539)) (OPT BRH10A08 (V52828))	A-P, R-AA	5
R -29R	BACN10JC08CD		.NUT	AB,AC	5
29S	113T1720-45		.RETAINER-SEAL	A-P, R-AC	1

57-26-11



FIG. & ITEM	PART NO.	AIRLINE PART NUMBER	NOMENCLATURE 1234567	EFF CODE	QTY PER ASSY
01-29V	113T1720-39		.SEAL- (MFD FROM EXTR RUBBER 10-60754-718 9.60 IN. 10-60754-279 OPT TO -718)	A-P,U ,V,X, Y	1
R -29W	113T1720-85		.SEAL- (MFD FROM EXTR RUBBER F25.01 10-60754-279 56.00 IN)	R-T,W ,Z-AC	1
R 30	113T1720-12		.SEAL-UPR FLAPPER (MFD FROM EXTR RUBBER 10-60754-420 15.00 IN.) (ITEMS 30, 35, 95, 100 AND 110 TOGETHER ARE OPT TO ITEMS 30A, 35A, 95A, 100A, AND 110A)	A-H	1
R 30A	113T1720-32		.SEAL-UPR FLAPPER (MFD FROM EXTR RUBBER 10-60754-20 15.00 IN.) (ITEMS 30, 35, 95, 100 AND 110 TOGETHER ARE OPT TO ITEMS 30A, 35A, 95A, 100A AND 110A)	A-H	1
R -30B	113T1720-12		.SEAL-UPR FLAPPER (MFD FROM EXTR RUBBER 10-60754-420 15.00 IN.) (ITEMS 30B, 35B, 95B, 100B AND 110B TOGETHER ARE OPT TO ITEMS 30C, 35C, 95C, 100C, AND 110C)	J-P,U ,V,X, Y	1
R -30C	113T1720-32		.SEAL-UPR FLAPPER (MFD FROM EXTR RUBBER 10-60754-20 15.00 IN.) (ITEMS 30B, 35B, 95B, 100B AND 110B TOGETHER ARE OPT TO ITEMS 30C, 35C, 95C, 100C, AND 110C)	J-P,U ,V,X, Y	1
R -30D	113T1720-32		.SEAL-UPR FLAPPER (MFD FROM EXTR RUBBER 10-60754-20 15.0 IN)	R-T,W ,Z-AC	1

57-26-11

 ILLUSTRATED PARTS LIST  
 01.1 Page 1024  
 Nov 01/05


**BOEING**  
 COMPONENT  
 MAINTENANCE MANUAL

FIG. & ITEM	PART NO.	AIRLINE PART NUMBER	NOMENCLATURE 1234567	EFF CODE	QTY PER ASSY
R 01-33	113T1720-68		.SEAL-UPR FLAPPER (MFD FROM EXTR RUBBER 10-60754-20 15.00 IN)	A-P, R-AC	1
35	113T1720-10		.SEAL-BOTTOM FLAPPER (MFD FROM EXTR RUBBER 10-60754-420 19.00 IN.) (ITEMS 30, 35, 95, 100 AND 110 TOGETHER ARE OPT TO ITEMS 30A, 35A, 95A, 100A AND 110A)	A-H	1
35A	113T1720-30		.SEAL-BOTTOM FLAPPER (MFD FROM EXTR RUBBER 10-60754-20 19.00 IN.) (ITEMS 30, 35, 95, 100 AND 110 TOGETHER ARE OPT TO ITEMS 30A, 35A, 95A, 100A AND 110A)	A-H	1
R -35B	113T1720-10		.SEAL-BOTTOM FLAPPER (MFD FROM EXTR RUBBER 10-60754-420 19.00 IN.) (ITEMS 30B, 35B, 95B, 100B AND 110B TOGETHER ARE OPT TO ITEMS 30C, 35C, 95C, 100C, AND 110C)	J-P,U ,V,X, Y	1
R -35C	113T1720-30		.SEAL-BOTTOM FLAPPER (MFD FROM EXTR RUBBER 10-60754-20 19.00 IN.) (ITEMS 30B, 35B, 95B, 100B AND 110B TOGETHER ARE OPT TO ITEMS 30C, 35C, 95C, 100C, AND 110C)	J-P,U ,V,X, Y	1
R -35D	113T1720-30		.SEAL-BOTTOM FLAPPER (MFD FROM EXTR RUBBER 10-60754-20 19.0 IN)	R-T,W ,Z-AC	1

57-26-11

ILLUSTRATED PARTS LIST

01.1

Page 1025

Nov 01/05

FIG. & ITEM	PART NO.	AIRLINE PART NUMBER	NOMENCLATURE 1234567	EFF CODE	QTY PER ASSY
01-					
38	113T1720-25		DELETED		
40	113T1720-3		DELETED		
40A	113T1720-27		DELETED		
-45	113T1720-4		DELETED		
-45A	113T1720-28		DELETED		
50	113T1720-13		DELETED		
R -50A	113T1720-59		.RETAINER-SEAL	A,B,E F,J K,N,U V	1
R -50B	113T1720-87		.RETAINER-SEAL	R,T,W AB	1
-55	113T1720-14		DELETED		
R -55A	113T1720-60		.RETAINER-SEAL	C,D,G H,L M,P,X Y	1
R -55B	113T1720-88		.RETAINER-SEAL	S,Z,A A,AC	1
57	113T1720-41		.RETAINER ASSY-SEAL	A,B,E F,J K,N,U V	1
R -57A	113T1720-91		.RETAINER ASSY-SEAL	R,T,W AB	1
-59	113T1720-42		.RETAINER ASSY-SEAL	C,D,G H,L M,P,X Y	1
R -59A	113T1720-92		.RETAINER ASSY-SEAL	S,Z,A A,AC	1

# 57-26-11

 ILLUSTRATED PARTS LIST  
 01.1 Page 1026  
 Nov 01/05


**BOEING**  
 COMPONENT  
 MAINTENANCE MANUAL

FIG. & ITEM	PART NO.	AIRLINE PART NUMBER	NOMENCLATURE 1234567	EFF CODE	QTY PER ASSY
01-60	BACB30NN3K3		.BOLT	A-P, R-AC	30
63	BACB30NN3K10		DELETED		
63A	BACB30NN3K9		.BOLT	A-P, R-AC	5
65	BACB30NN3K7		.BOLT	A-P, R-AC	4
70	BACB30NN3K5		.BOLT	A-P, R-AC	2
R 75	AN960XC10L		.WASHER	A-P, R-AA	20
R -75A	NAS1149C0332B		.WASHER	AB,AC	20
R 77	AN960XC10L		.WASHER	A-P, R-AA	21
R -77A	NAS1149E0332P		.WASHER	AB,AC	21
80	113T1720-8		.SHIM	A-P, R-AA	2
R -80A	BACS40R008C022F		.SHIM	AB,AC	2
85	113T1720-7		.SHIM	A-P, R-AA	2
R -85A	BACS40R008C011F		.SHIM	AB,AC	2
90	H10-3BAC		.NUT- (V15653) (SPEC BACN10JC3) (OPT NS202101-02 (V80539)) (OPT RMLH9075-3W (V72962)) (OPT T6S1032J (V71087)) (OPT VN303A02 (V92215)) (OPT 96-02 (V80539)) (OPT BRH10A3 (V52828))	A-P, R-AA	41

57-26-11

ILLUSTRATED PARTS LIST

01.1

Page 1027

Nov 01/05

FIG. & ITEM	PART NO.	AIRLINE PART NUMBER	NOMENCLATURE 1234567	EFF CODE	QTY PER ASSY
R 01- -90A	BRH10C3D		.NUT- (V52828) (SPEC BACN10JC3CD) (OPT T6C1032JCD (V11815)) (OPT NS202486-02 (V80539)) (OPT 102LH9075-3W (V72962)) (OPT H51650-3BAC (V15653)) -----*	AB,AC	41
91	MS20427M5C		..RIVET- (SIZE DETERMINE ON INST)	A-P, R-AC	14
92	113T1720-37		..STRAP	A,B,E ,F,J, K,N,R ,T-W	1
-93	113T1720-38		..STRAP	C,D,G ,H,L, M,P,S ,X-AA	1
94	113T1720-33		..RETAINER	A,B,E ,F,J, K,N,U ,V	1
R -94A	113T1720-89		..RETAINER	R,T,W ,AB	1
-94G	113T1720-34		..RETAINER	C,D,G ,H,L, M,P,X ,Y	1

# 57-26-11

 ILLUSTRATED PARTS LIST  
 01.1 Page 1028  
 Nov 01/05


**BOEING**  
 COMPONENT  
 MAINTENANCE MANUAL

FIG. & ITEM	PART NO.	AIRLINE PART NUMBER	NOMENCLATURE 1234567	EFF CODE	QTY PER ASSY
R 01- -94H	113T1720-90		.RETAINER	S,Z,A A,AC	1
R 95	113T1720-11		.RETAINER-UPR (ITEMS 30, 35, 95, 100 AND 110 TOGETHER ARE OPT TO ITEMS 30A, 35A, 95A, 100A AND 110A)	A-H	1
R -95A	113T1720-31		.RETAINER-UPR (ITEMS 30, 35, 95, 100 AND 110 TOGETHER ARE OPT TO ITEMS 30A, 35A, 95A, 100A AND 110A)	A-H	1
R -95B	113T1720-11		.RETAINER-UPR FLAPPER (ITEMS 30B, 35B, 95B, 100B AND 110B TOGETHER ARE OPT TO ITEMS 30C, 35C, 95C, 100C, AND 110C)	J-P,U ,V,X, Y	1
R -95C	113T1720-31		.RETAINER-UPR FLAPPER (ITEMS 30B, 35B, 95B, 100B AND 110B TOGETHER ARE OPT TO ITEMS 30C, 35C, 95C, 100C, AND 110C)	J-P,U ,V,X, Y	1
R -95D	113T1720-77		.RETAINER-UPR FLAPPER	R,T,V ,W	1
R -95E	113T1720-109		.RETAINER-UPR FLAPPER	AB	1
R -96	113T1720-78		.RETAINER-UPR FLAPPER	S,Y,Z ,AA	1
R -96A	113T1720-110		.RETAINER-UPR FLAPPER	AC	1
R 97	113T1720-67		.RETAINER-UPR FLAPPER	A-P,U ,X	1

57-26-11

ILLUSTRATED PARTS LIST

01.1

Page 1029

Nov 01/05

FIG. & ITEM	PART NO.	AIRLINE PART NUMBER	NOMENCLATURE 1234567	EFF CODE	QTY PER ASSY
01-					
R -97A	113T1720-79		.RETAINER-UPR FLAPPER	R,V,W	1
R -97B	113T1720-103		.RETAINER-UPR FLAPPER	T	1
R -97C	113T1720-111		.RETAINER-UPR FLAPPER	AB	1
R -98	113T1720-80		.RETAINER-UPR FLAPPER	S,Y,Z	1
R -98A	113T1720-104		.RETAINER-UPR FLAPPER	AA	1
R -98B	113T1720-112		.RETAINER-UPR FLAPPER	AC	1
100	113T1720-9		.RETAINER-BOTTOM (ITEMS 30, 35, 95, 100 AND 110 TOGETHER ARE OPT TO ITEMS 30A, 35A, 95A, 100A AND 110A)	A-H	1
-100A	113T1720-29		.RETAINER-BOTTOM (ITEMS 30, 35, 95, 100 AND 110 TOGETHER ARE OPT TO ITEMS 30A, 35A, 95A, 100A AND 110A)	A-H	1
R -100B	113T1720-9		.RETAINER-UPR FLAPPER (ITEMS 30B, 35B, 95B, 100B AND 110B TOGETHER ARE OPT TO ITEMS 30C, 35C, 95C, 100C, AND 110C)	J-P,U ,V,X, Y	1
R -100C	113T1720-29		.RETAINER-UPR FLAPPER (ITEMS 30B, 35B, 95B, 100B AND 110B TOGETHER ARE OPT TO ITEMS 30C, 35C, 95C, 100C, AND 110C)	J-P,U ,V,X, Y	1
R -100D	113T1720-29		.RETAINER-UPR FLAPPER	R-T,W ,Z-AC	1
			ATTACHING PARTS		

57-26-11

 ILLUSTRATED PARTS LIST  
 01.1 Page 1030  
 Nov 01/05


**BOEING**  
 COMPONENT  
 MAINTENANCE MANUAL

FIG. & ITEM	PART NO.	AIRLINE PART NUMBER	NOMENCLATURE 1234567	EFF CODE	QTY PER ASSY
R 01-105	BACB30NN3K4		.BOLT	A-H	23
-105A	BACB30NN3K3		.BOLT	J-P, R-AC	23
110	NS103191-02-2		.NUTPLATE- (V80539) (SPEC BACN10KE3B2) (OPT F51750-3-2 (V15653)) (OPT RMF9213-2-3 (V72962)) (OPT BRFR220A3-2 (V52825)) (ITEMS 30, 35, 95, 100 AND 110 TOGETHER ARE OPT TO ITEMS 30A, 35A, 95A, 100A AND 110A)	A-H	23
-110A	MF19058-3-2BAC		.NUTPLATE- (V15653) (SPEC BACN10YF32) (ITEMS 30, 35, 95, 100 AND 110 TOGETHER ARE OPT TO ITEMS 30A, 35A, 95A, 100A AND 110A)	A-H	23
R -110B	NS103191-02-2		-----*----- .NUTPLATE- (V80539) (SPEC BACN10KE3B2) (OPT F51750-3-2 (V15653)) (OPT RMF9213-2-3 (V72962)) (OPT BRFR220A3-2 (V52825)) (ITEMS 30B, 35B, 95B, 100B AND 110B TOGETHER ARE OPT TO ITEMS 30C, 35C, 95C, 100C, AND 110C)	J-P,U ,V,X, Y	23

57-26-11

ILLUSTRATED PARTS LIST

01.1

Page 1031

Nov 01/05



FIG. & ITEM	PART NO.	AIRLINE PART NUMBER	NOMENCLATURE 1234567	EFF CODE	QTY PER ASSY
R 01- -110C	BRFM20A3		.NUTPLATE- (V52828) (SPEC BACN10JN3) (OPT MF1000-3BAC (V15653)) (OPT NS103218-02 (V80539)) (OPT RMF9201M3 (V72962)) (OPT VN252A02 (V92215)) (OPT MF1000-3BAC (V15653)) (OPT MF53049-3 (V15653)) (ITEMS 30B, 35B, 95B, 100B AND 110B TOGETHER ARE OPT TO ITEMS 30C, 35C, 95C, 100C, AND 110C)	J-P,U ,V,X, Y	23
R -110D	BRFM20A3		.NUTPLATE- (V52828) (SPEC BACN10JN3) (OPT MF1000-3BAC (V15653)) (OPT NS103218-02 (V80539)) (OPT RMF9201M3 (V72962)) (OPT VN252A02 (V92215)) (OPT MF1000-3BAC (V15653)) (OPT MF53049-3 (V15653)) ATTACHING PARTS	R-T,W ,Z-AC	23

# 57-26-11

 ILLUSTRATED PARTS LIST  
 01.1 Page 1032  
 Nov 01/05


**BOEING**  
 COMPONENT  
 MAINTENANCE MANUAL

FIG. & ITEM	PART NO.	AIRLINE PART NUMBER	NOMENCLATURE 1234567	EFF CODE	QTY PER ASSY
01-115	BACR15BA3AD		.RIVET- (SIZE DETERMINE ON INST) -----*	A-P, R-AC	46
120	113T1714-7		.DOOR-ACCESS (113T1714-21 I/W 113T1714-7 SUBJECT TO CUSTOMER PREFERENCE)	A,B,E ,J,K, N,R, T-W,A B	1
R -120A	113T1714-21		.DOOR-ACCESS (113T1714-21 I/W 113T1714-7 SUBJECT TO CUSTOMER PREFERENCE)	F	1
-125	113T1714-8		.DOOR-ACCESS (113T1714-22 I/W 113T1714-8 SUBJECT TO COLOR PREFERENCE)	C,D,G ,L,M, P,S, X-AA, AC	1
R -125A	113T1714-22		.DOOR-ACCESS (113T1714-22 I/W 113T1714-8 SUBJECT TO COLOR PREFERENCE)	H	1
130	113T1714-9		.DOOR-ACCESS (113T1714-23 I/W 113T1714-9 SUBJECT TO COLOR PREFERENCE)	A,B,E ,J,K, N,R, T-W,A B	1
R -130A	113T1714-23		.DOOR-ACCESS (113T1714-23 I/W 113T1714-9 SUBJECT TO COLOR PREFERENCE)	F	1
-135	113T1714-10		.DOOR-ACCESS (113T1714-24 I/W 113T1714-10 SUBJECT TO COLOR PREFERENCE)	C,D,G ,L,M, P,S, X-AA, AC	1

57-26-11

ILLUSTRATED PARTS LIST

01.1

Page 1033

Nov 01/05

FIG. & ITEM	PART NO.	AIRLINE PART NUMBER	NOMENCLATURE 1234567	EFF CODE	QTY PER ASSY
R 01- -135A	113T1714-24		.DOOR-ACCESS (113T1714-24 I/W 113T1714-10 SUBJECT TO COLOR PREFERENCE) ATTACHING PARTS	H	1
140	BACB30NN3K3		.BOLT  -----*-----	A-P, R-AC	4
145 -145A -145B	LHCB12BA LHCB12BAC ASSB12-46		DELETED DELETED DELETED		
R 145C	ASSB12-37		.BEARING- (V15860) (SPEC 60B00180-242) (ONE (1) ITEM 145C WITH TWO (2) ITEM 146 OPT TO ONE (1) ITEM 145D WITH TWO (2) ITEM 146A) (OPT ASB12-101 (VS0352)) (OPT LHCB12BA (V73134))	A-P, R-AA	2
R -145D	NC12-7		.BEARING- (V56644) (SPEC 60B00180-245) (ONE (1) ITEM 145C WITH TWO (2) ITEM 146 OPT TO ONE (1) ITEM 145D WITH TWO (2) ITEM 146A) (OPT LHCB12BAC (V73134)) (OPT BLP12F245 (V16746)) (OPT ASSB12-46 (V15860))	A-P, R-AA	2

57-26-11

 ILLUSTRATED PARTS LIST  
 01.1 Page 1034  
 Nov 01/05


**BOEING**  
 COMPONENT  
 MAINTENANCE MANUAL

FIG. & ITEM	PART NO.	AIRLINE PART NUMBER	NOMENCLATURE 1234567	EFF CODE	QTY PER ASSY
R 01- -145E	NC12-7		.BEARING- (V56644) (SPEC 60B00180-245) (OPT LHCB12BAC (V73134)) (OPT BLP12F245 (V16746)) (OPT ASSB12-46 (V15860))	AB,AC	2
146	113T1256-26		.SEAL- (ONE (1) ITEM 145C WITH TWO (2) ITEM 146 OPT TO ONE (1) ITEM 145D WITH TWO (2) ITEM 146A)	A-P, R-AA	4
-146A	113T1256-61		.SEAL- (ONE (1) ITEM 145 WITH TWO (2) ITEM 146 OPT TO ONE (1) ITEM 145D WITH TWO (2) ITEM 146A) (USED WITH ITEM 145B)	A-P, R-AA	4
R -146B	113T1256-61		.SEAL ATTACHING PARTS	AB,AC	4
150	BACB30LR3P4		.BOLT	A-P, R-AA	10
R -150A	BACB30LH3P6		.BOLT	AB,AC	10
155	113T1267-9		.PLATE-RTNR	A-P, R-AC	2
160	113T1267-10		.RETAINER-BRG	A-P, R-AC	2
165	113T1722-1		-----*----- .FRAME ASSY-FWD (OPT ITEM 165A)	A,B,E ,F,J, K,N,R ,T-W	1

57-26-11

ILLUSTRATED PARTS LIST

01.1

Page 1035

Nov 01/05

FIG. & ITEM	PART NO.	AIRLINE PART NUMBER	NOMENCLATURE 1234567	EFF CODE	QTY PER ASSY
01- -165A	113T1722-7		.FRAME ASSY-FWD (OPT ITEM 165)	A,B,E ,F,J, K,N,R ,T-W	1
R -165B	113T1722-7		.FRAME ASSY-FWD	AB	1
-170	113T1722-2		.FRAME ASSY-FWD (OPT ITEM 170A)	C,D,G ,H,L, M,P,S ,X-AA	1
-170A	113T1722-8		.FRAME ASSY-FWD (OPT ITEM 170)	C,D,G ,H,L, M,P,S ,X-AA	1
R -170B	113T1722-8		.FRAME ASSY-FWD ATTACHING PARTS	AC	1
175	BACR15BA6AD		.RIVET- (SIZE DETERMINE ON INST)	A-P, R-AA	20
R -175A	BACR15BA6ADC		.RIVET- (SIZE DETERMINE ON INST)	AB,AC	20
180	NAS1399CW6-6		DELETED		
180A	NAS1399MW6-6		.RIVET	A-P, R-AA	2
R -180B	NAS1399MW6A6		.RIVET	AB,AC	2
R 182	NAS1399D8A6		.RIVET	A-P, R-AC	3
R 185	BACR15BA8AD		.RIVET- (SIZE DETERMINE ON INST)	A-P, R-AA	5
R -185A	BACR15BA8ADC		.RIVET- (SIZE DETERMINE ON INST)	AB,AC	5
187	NAS1399MW8-6		DELETED		

57-26-11

ILLUSTRATED PARTS LIST

01.1

Page 1036

Nov 01/05


**BOEING**  
 COMPONENT  
 MAINTENANCE MANUAL

FIG. & ITEM	PART NO.	AIRLINE PART NUMBER	NOMENCLATURE 1234567	EFF CODE	QTY PER ASSY
01-					
R 187C	NAS1399MW8-6		DELETED		
R 188	NAS1399D8A8		.RIVET	E,G	2
-188A	NAS1399D8A6		DELETED		
R -188B	NAS1399D8A5		.RIVET	A-D,F ,H-P, ,R,S, ,U-AC	2
			-----*-----		
190	MS15001-1		..FITTING- (USED ON ITEMS 165, 170)	A-P, T-AA	2
193	MS15001-3		..FITTING- (USED ON ITEMS 165A, 165B, 170A, 170B)	A-P, R-AC	2
195	113T1722-5		..FRAME- (USED ON ITEM 165)	A,B,E ,F,J, K,N,R ,T-W	1
195A	113T1722-9		..FRAME- (OPT ITEM 195B) (USED ON ITEMS 165A, 165B)	A,B,E ,F,J, K,N,R ,T-W, AB	1
R -195B	113T1722-11		..FRAME- (OPT ITEM 195A) (USED ON ITEMS 165A, 165B)	A,B,E ,F,J, K,N,R ,T-W, AB	1
-200	113T1722-6		..FRAME- (USED ON ITEM 170)	C,D,G ,H,L, M,P,S ,X-AA	1
-200A	113T1722-10		..FRAME- (OPT ITEM 200B) (USED ON ITEMS 170A, 170B)	C,D,G ,H,L, M,P,S ,X-AA ,AC	1

57-26-11

ILLUSTRATED PARTS LIST

01.1

Page 1037

Nov 01/05

FIG. & ITEM	PART NO.	AIRLINE PART NUMBER	NOMENCLATURE 1234567	EFF CODE	QTY PER ASSY
R 01- -200B	113T1722-12		..FRAME- (OPT ITEM 200A) (USED ON ITEMS 170A, 170B)	C,D,G ,H,L, M,P,S ,X-AA ,AC	1
201	BACB30LJ6-20		DELETED		
201A	BACB30LJ6-22		.BOLT	A-P, R-AC	1
202	BACW10BP6AC		.WASHER	A-P, R-AA	2
R -202A	BACW10BP6CD		.WASHER	AB,AC	2
204	AN960C616		.WASHER	A-P, R-AA	1
R -204A	NAS1149E0663P		.WASHER	AB,AC	1
205	BRH10A6		.NUT (V52828) (SPEC BACN10JC6) (OPT 96-064 (V80539)) (OPT RMLH9075-6 (V72962)) (OPT H10-6BAC (V15653))	A-P,R ,S, U-Z	1
R -205A	BRH10C6D		.NUT (V52828) (SPEC BACN10JC6CD) (OPT H51650-6BAC (V15653))	T,A A-AC	1
206	BACB28AK06-049		.BUSHING	A-P, R-AC	1

57-26-11

 ILLUSTRATED PARTS LIST  
 01.1 Page 1038  
 Nov 01/05

**BOEING**  
 COMPONENT  
 MAINTENANCE MANUAL

FIG. & ITEM	PART NO.	AIRLINE PART NUMBER	NOMENCLATURE 1234567	EFF CODE	QTY PER ASSY
01-207	ATF6		.BEARING- (V60380) (SPEC BACB10ET06) (OPT 6AFC817 (V92563)) (OPT YAF06B (V07484))	A-P, R-AA	1
R -207A	BACB10HH06C		.BEARING	AB,AC	1
209	113T1724-1		.FRAME ASSY-AFT	A,B,E ,F,J, K,N,R ,U-W	1
R -209A	113T1724-17		.FRAME ASSY-AFT	T,AB	1
-210	113T1724-2		.FRAME ASSY-AFT	C,D,G ,H,L, M,P,S ,X-Z	1
R -210A	113T1724-18		.FRAME ASSY-AFT ATTACHING PARTS	AA,AC	1
215	BACR15BA6AD		.RIVET- (SIZE DETERMINE ON INST)	A-P, R-AA	34
R -215A	BACR15BA6ADC		.RIVET- (SIZE DETERMINE ON INST) -----*-----	AB,AC	34
220	NAS1399CW6-6		DELETED		
220A	NAS1399MW6-6		.RIVET	A-P, R-AA	2
R -220B	NAS1399MW6A6		.RIVET	AB,AC	2
225	BACB28AM07B025		..BUSHING	A-P, R-AC	1

**57-26-11**

ILLUSTRATED PARTS LIST  
 01.1 Page 1039  
 Nov 01/05



FIG. & ITEM	PART NO.	AIRLINE PART NUMBER	NOMENCLATURE 1234567	EFF CODE	QTY PER ASSY
01-230	BACB28AM09B025A		..BUSHING	A-P, R-AC	1
235	BACB28AP05P025		..BUSHING	A-P, R-AC	1
240	BACB28AP06P025		..BUSHING	A-P, R-AC	1
245	113T1724-5		..FRAME- (OPT ITEM 245A)	A,B,E ,F,J, K,N,R ,U-W	1
R -245A	113T1724-9		..FRAME- (OPT ITEM 245)	A,B,E ,F,J, K,N,R ,U-W	1
R -245B	113T1724-19		..FRAME- (OPT ITEM 245C)	T,AB	1
R -245C	113T1724-21		..FRAME- (OPT ITEM 245B)	T,AB	1
-250	113T1724-6		..FRAME- (OPT ITEM 250A)	C,D,G ,H,L, M,P,S ,X-Z	1
R -250A	113T1724-10		..FRAME- (OPT ITEM 250)	C,D,G ,H,L, M,P,S ,X-Z	1
R -250B	113T1724-20		..FRAME- (OPT ITEM 250C)	AA,AC	1
R -250C	113T1724-22		..FRAME- (OPT ITEM 250B)	AA,AC	1

57-26-11

 ILLUSTRATED PARTS LIST  
 01.1 Page 1040  
 Nov 01/05


**BOEING**  
 COMPONENT  
 MAINTENANCE MANUAL

FIG. & ITEM	PART NO.	AIRLINE PART NUMBER	NOMENCLATURE 1234567	EFF CODE	QTY PER ASSY
01-					
255	113T1721-1		DELETED		
255A	113T1721-7		.BONDED ASSY-CTR	A,B,E ,F,J, K,N	1
R -255B	113T1721-13		.BONDED ASSY-CTR	R,U-W	1
R -255C	113T1721-19		.BONDED ASSY-CTR	T	1
R -255D	113T1721-27		.BONDED ASSY-CTR	AB	1
-260	113T1721-2		DELETED		
-260A	113T1721-8		.BONDED ASSY-CTR	C,D,G ,H,L, M,P	1
R -260B	113T1721-14		.BONDED ASSY-CTR	S,X-Z	1
R -260C	113T1721-20		.BONDED ASSY-CTR	AA	1
R -260D	113T1721-28		.BONDED ASSY-CTR	AC	1
265	NS103191-02-2		..NUTPLATE- (V80539) (SPEC BACN10KE3B2) (OPT F51750-3-2 (V15653)) (OPT RMF9213-2-3 (V72962)) (OPT BRFR220A3-2 (V52825)) ATTACHING PARTS	A-P, R-AC	4
270	BACR15BA3AD		..RIVET- (SIZE DETERMINE ON INST) -----*-----	A-P, R-AC	8
275	113T1721-3		DELETED		
275A	113T1721-9		..BONDED ASSY	A,B,E ,F,J, K,N	1

57-26-11

ILLUSTRATED PARTS LIST

01.1

Page 1041

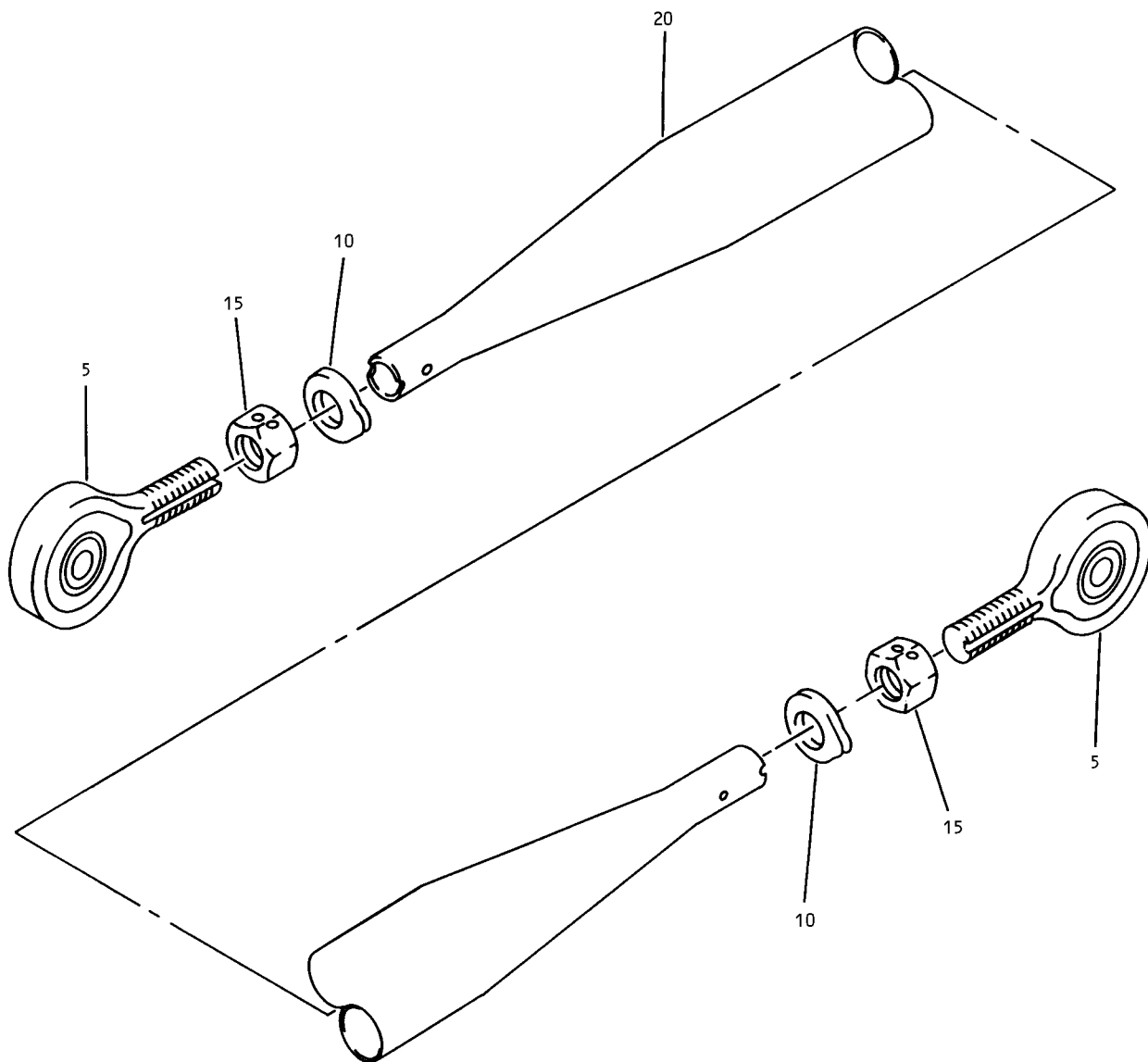
Nov 01/05

FIG. & ITEM	PART NO.	AIRLINE PART NUMBER	NOMENCLATURE 1234567	EFF CODE	QTY PER ASSY
01-					
R -275B	113T1721-15		..BONDED ASSY	R,U-W	1
R -275C	113T1721-21		..BONDED ASSY	T	1
R -275D	113T1721-29		..BONDED ASSY	AB	1
-280	113T1721-4		DELETED		
-280A	113T1721-10		..BONDED ASSY	C,D,G ,H,L, M,P	1
R -280B	113T1721-16		..BONDED ASSY	S,X-Z	1
R -280C	113T1721-22		..BONDED ASSY	AA	1
R -280D	113T1721-32		..BONDED ASSY	AC	1
R 285	113T1721-25		...STRIP-RUB	T,AB	1
R -285A	113T1721-25		...STRIP-RUB (POST SB 767-57-0087)	R	1
R -290	113T1721-26		...STRIP-RUB	AA,AC	1
R -290A	113T1721-26		...STRIP-RUB (POST SB 767-57-0087)	S	1

- Item Not Illustrated

# 57-26-11

ILLUSTRATED PARTS LIST  
 01.1 Page 1042  
 Nov 01/05



No. 3 Fairing Inboard Trailing Edge Flap Moveable Assembly  
Figure 2

**57-26-11**

ILLUSTRATED PARTS LIST  
01.1 Page 1044  
Nov 01/05

**BOEING**  
 COMPONENT  
 MAINTENANCE MANUAL

FIG. & ITEM	PART NO.	AIRLINE PART NUMBER	NOMENCLATURE 1234567	EFF CODE	QTY PER ASSY
R 02-1A	113T1732-1		ROD ASSY-PUSH MOVEABLE FAIRING	Q	RF
R 5	ADNE5-311NW9		.ROD-END (V15860) (SPEC S012T235-105-79) (OPT ARNM5-101KM (V50294)) (OPT MSSRRSK05FBDF (V73134)) (OPT SWRKMS5-370 (V81376))	Q	2
R 10	NAS513-6		.WASHER	Q	2
R 15	NAS509-6		.NUT	Q	2
R 20	113T1732-2		.TUBE	Q	1

- Item Not Illustrated

**57-26-11**

ILLUSTRATED PARTS LIST

01.1

Page 1045

Nov 01/05